



**NEW!**

**Oil meters  
HZ 5 DR and HZ 6 DR**  
With LCD digital display  
and pulse generator  
for digital processing

## HZ 5 DR and HZ 6 DR oil meters

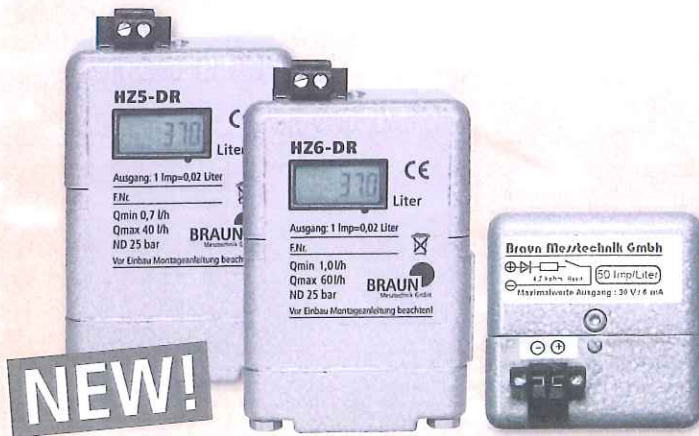
**New!** With pulse generator for digital processing

- Pulse output with higher resolution (50 pulses = 1 litre)
- Consumption is digitally processable
- Data can be statistically evaluated
- Cost efficiency becomes calculable
- Can be retrofitted to any existing heating or measuring system
- Robust and durable
- Use energy efficiently and economically
- Optimally exploit oil price fluctuations
- Constantly transparent heating oil consumption allows exact monitoring of energy costs and stores
- Optimally monitor your oil consumption to check the energy saved after modernising your building

Perfect technology for exact consumption monitoring.

## Exact consumption monitoring

**HZ 5 DR and HZ 6 DR oil meters with LCD digital display and pulse generator for digital processing**



**NEW!**

### Technical data on HZ 5 DR/HZ 6 DR oil meters

<b>HZ 5 DR</b>	Article number:	89 315 008
	Throughput range:	0.7 to 40 l/h - 0.6 to 34 kg/h
	Burner performance:	7 kW to 400 kW
<b>HZ 6 DR</b>	Article number:	89 316 008
	Throughput range:	1 to 60 l/h - 0.8 to 50.4 kg/h
	Burner performance:	10 kW to 600 kW
	Measuring accuracy:	± 1 %
	Reed contact:	1 pulse/0.02 litres
	Nominal pressure:	25 bar
	Loss of pressure:	0.05 to 0.2 bar
	Heating oil types:	EL according to DIN 51603
	Temperature range:	-5°C ... +70°C
	Connecting thread:	DIN 3852-X-G 1/8" internal
	Weight:	0.6 kg

### PULSE OUTPUT

- Connection via screw-clamp terminals
- Reed contact: max. 30 VDC | I<sub>max</sub> = 6 mA  
R<sub>s</sub> = 4.7 K-Ohm/0.6W (observe polarity)
- Principle: The power circuit of a counter or other registering device attached to the plus and minus terminal clamps is closed via the reed contact and 4.7 K-Ohm impedance. The input impedance should be at least 50 K-Ohm to ensure that the additional counter reaches its switching threshold.
- Pulse value: 1 pulse = 0.02 l | 50 pulses = 1 l
- Maximum frequency at 60l/h approx. 1 Hz (Due to the reed contact [-debouncing-], use remote counter with dampened input)

### LCD COUNTER

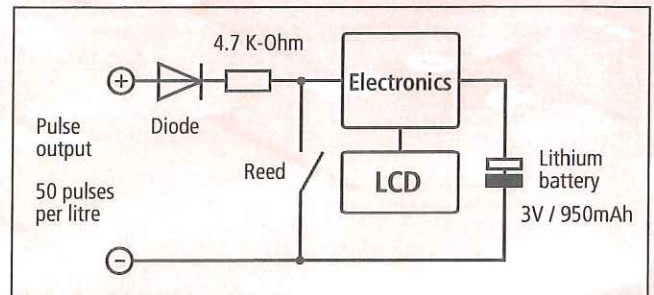
- 6-digit with 0.1 l display resolution
- 3V/950 mAh lithium-ion battery
- Lasts at least 9 years (depending on temperature and moisture)

### AMBIENT TEMPERATURE / ATMOSPHERIC MOISTURE

- 0 to 60 degrees Celsius
- Max. 85% RH, non-condensing
- CE-compliant electromagnetic compatibility
- DIN EN 61326-1 2006-10 version

### FUNCTION OF COUNTER AND OUTPUT

- The 6-digit LCD display with 6mm high figures has a display resolution of 0.1 litres (1 decimal point).
- A built-in 3V/950 mAh lithium battery supplies power. Its operational life is approx. 9 years.
- The internal reed contact supplies **50 pulses per litre**, or 20ml per pulse, to the output clamps. The electronics in the counter turn this into a decadic value with 0.1 litres after 5 pulses in order to operate the counter.
- Due to the 4.7 K-Ohm internal impedance, a connected remote counter should have an input impedance of at least 50 K-Ohm.
- The mounting instructions must be observed without fail if an additional counter is connected to the output.

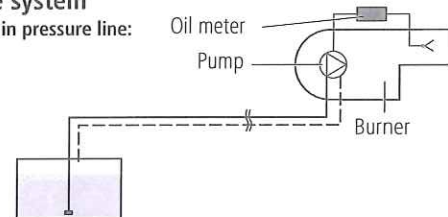


Schematic wiring diagram of HZ5-DR pulse counter and pulse output

### MOUNTING OPTIONS

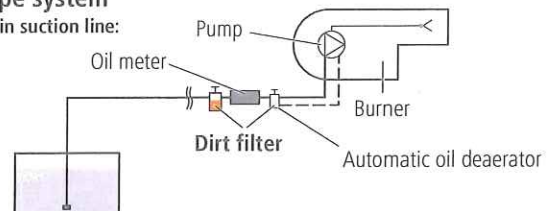
#### Two-pipe system

Installation in pressure line:

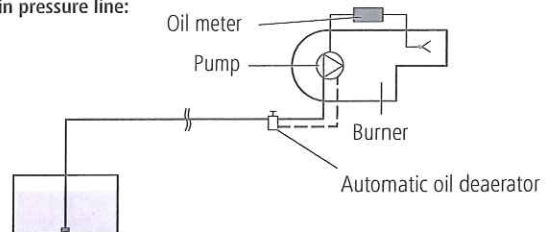


#### Single-pipe system

Installation in suction line:



Installation in pressure line:



### Available as accessories:

- Attachment sets for pressure-side fitting to 4/6 mm lines
- Attachment sets for suction-side fitting (single-line system) to 8/10/12 mm lines