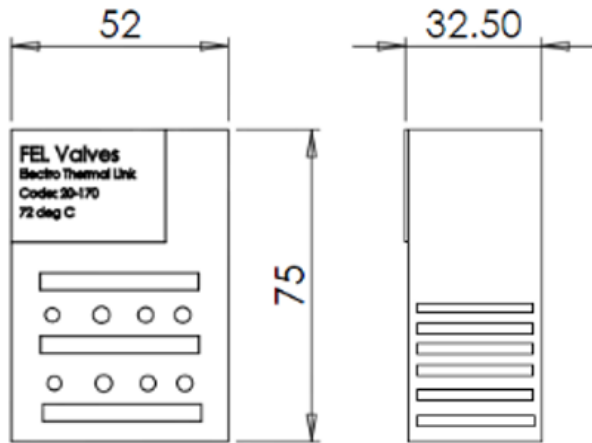


20-170 – 20-176 – Electro-Thermal Fusible Link

Designed for use with a free Fall Fire Valve (Electrical set up). The valve will come into action (Drop) when the electrical fuse is released.

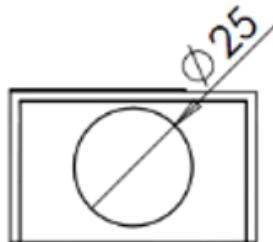


Electrical Rating:

10A, 230VAC

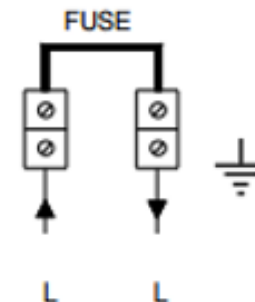
Enclosure:

IP30



Fuse Details:

- ▶ Single use non-resettable thermal fuse
- ▶ Suitable for use with standard single-phase power supplies 250V (typical 230V).
- ▶ Approvals: VDE, SEV, UL



* All information is sourced from our manufacturer's data and is intended for guidance only – FEL Valves Ltd can accept no liability for changes, omissions or errors.