



**GAMMON TECHNICAL PRODUCTS, INC.**  
P.O. BOX 400 - 2300 HWY 34  
MANASQUAN, N.J. 08736

**PHONE 732-223-4600**  
**FAX 732-223-5778**  
**WEBSITE [www.gammontech.com](http://www.gammontech.com)**  
**STORE [www.gammontechstore.com](http://www.gammontechstore.com)**

**AIR SYSTEM  
ACCESSORIES**

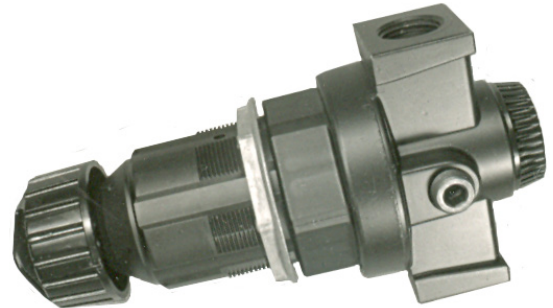
**BULLETIN 70  
(11-19)**

## AIR SYSTEM ACCESSORIES

### TAMPER-PROOF AIR PRESSURE REGULATOR

With the "key" removed from the knob, it is impossible to tamper with the air pressure adjustment. This unique feature makes this regulator superbly suited for use on airport refuelers for adjusting air reference pressures. An internal relief valve makes it self-relieving to prevent "creep" of the outlet pressure. Will control pressure with great accuracy between 10 and 200 psi. Price includes side-mounting hardware.

- Connections are 1/2" FNPT
- Maximum inlet pressure is 300 psig
- Outlet pressure adjustable to 125 psig
- Zinc body
- Nitrile seals



### HOW TO ORDER

	<u>Side Mount</u>	<u>Panel Mount</u>
Aluminum knob	GTP-1121A	GTP-1121-2A
Plastic knob	GTP-1121P	GTP-1121-2P

NOTE: add -G to include pressure gauge

### OPTIONAL ACCESSORIES



GTP-1121-1  
Key



GTP-2954C  
Pressure gauge, 0-160 psi

### AIR FILTER WITH AUTOMATIC WATER DRAIN

Designed to remove dirt and water from truck air systems, this filter will automatically drain collected water. The polyethylene filter element is rated at 5 microns. Steel shatter guard and manual drain cock included.

- Connections are 1/4" FNPT
- Maximum inlet pressure is 150 psi
- Minimum inlet pressure is 15 psi
- Polycarbonate plastic bowl
- Internal automatic drain



GTP-1923