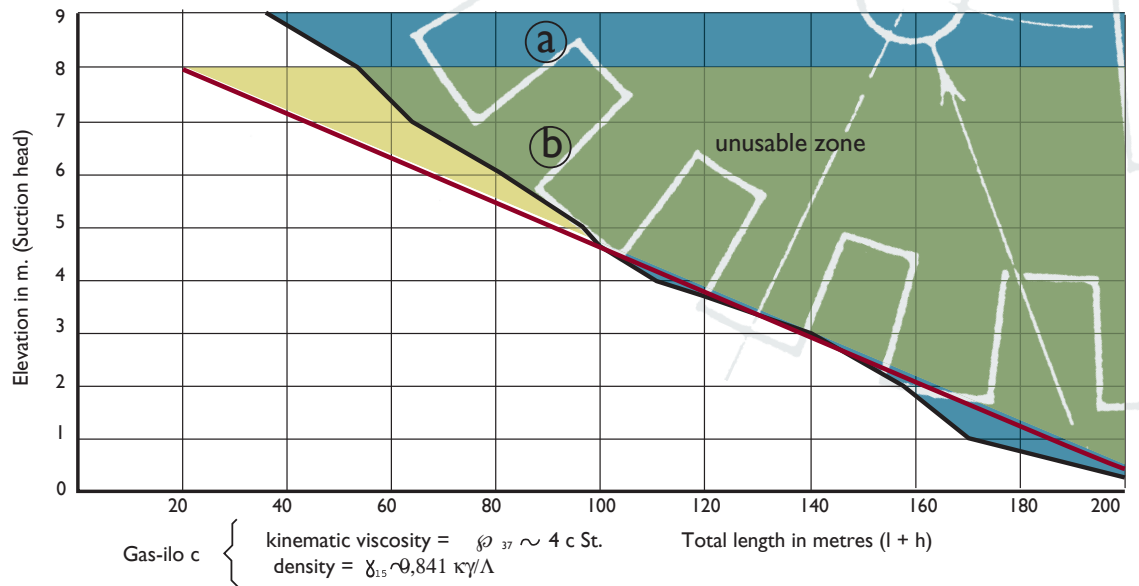


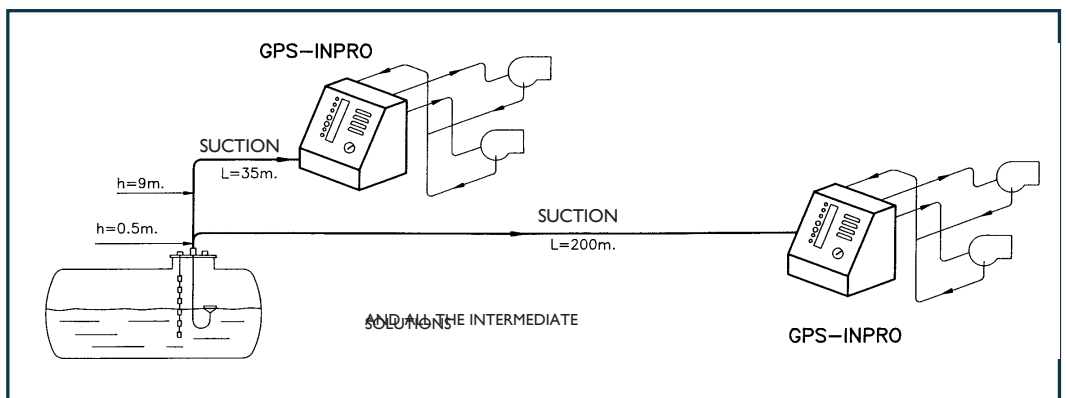
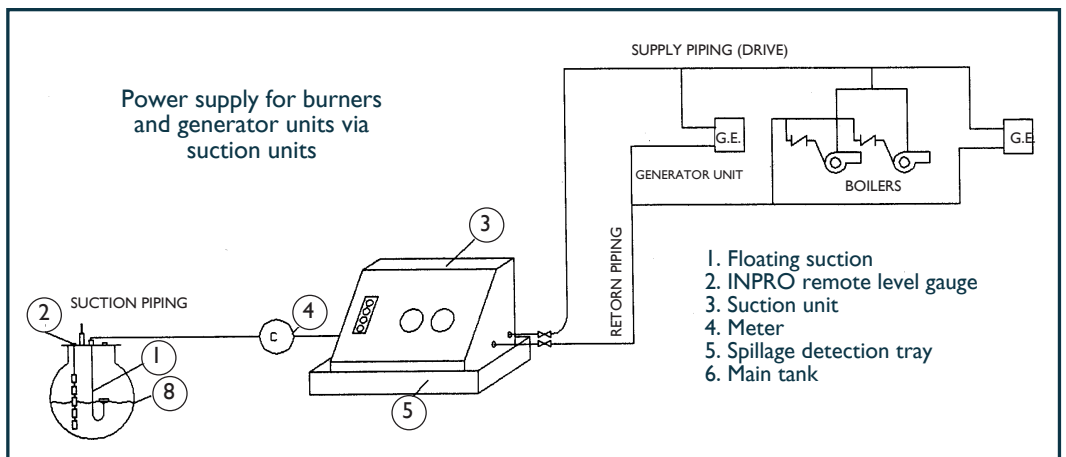
SUCTION UNITS: ELEVATION AND TOTAL LENGTH CURVES



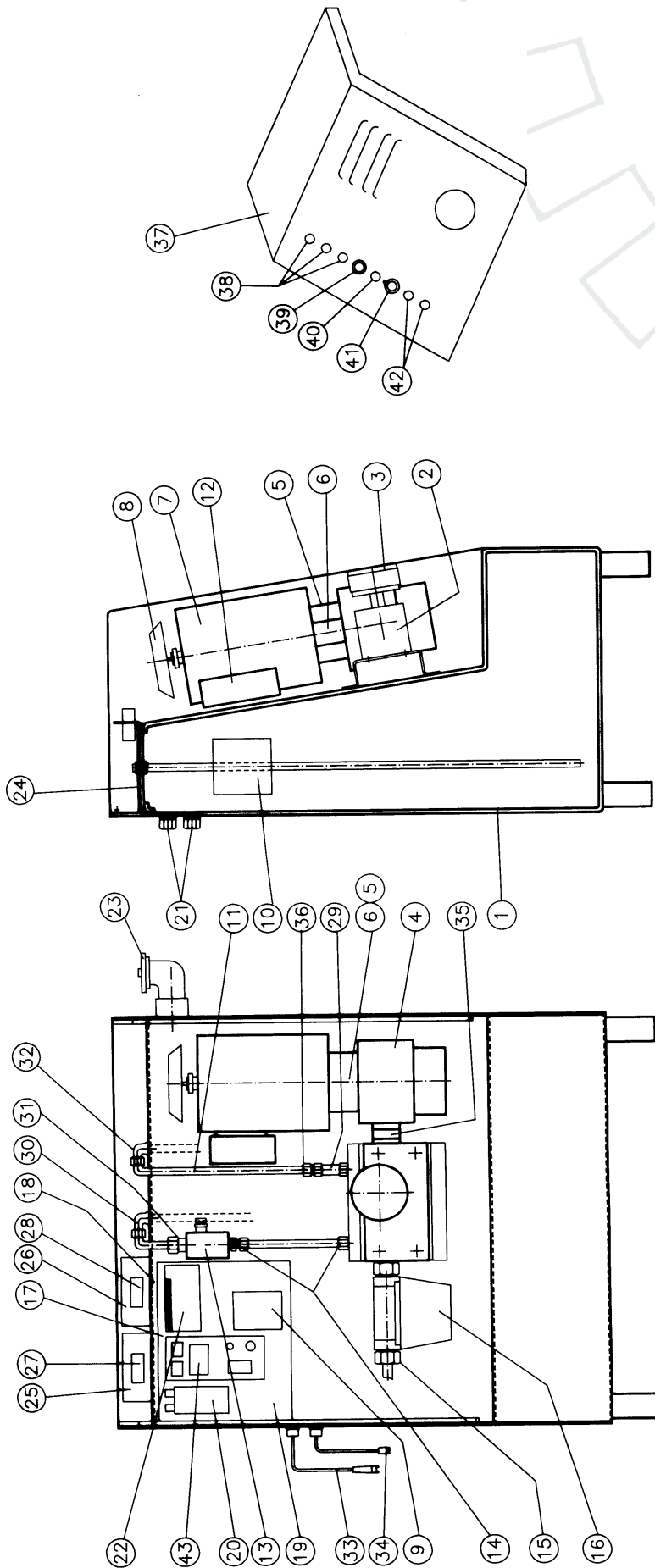
Elevation curves and total length

- (a) GPS-35N / GPS-35 GEW / GPS-70 N / 70 GE / GPS-35 DRUCK
- (b) GPS-130N / GPS-350 N / GPS-130 GE / GPS-350 GET

Examples for using INPRO Suction Units



EXPLANATORY DIAGRAM OF AN INPRO SUCTION UNIT



- | | | |
|----------------------|------------------------------------|---------------------------|
| 1. Tank | 19. Circuit support | 37. Rustproof cover |
| 2. Manifold | 20. Thermostat | 38. Neon pilot (12 V) |
| 3. Vacuum gauge | 21. Feedthrough (15 x 15) | 39. Push button |
| 4. Pump | 22. Spillage control circuit | 40. Fuse |
| 5. Connecting flange | 23. Filler top | 41. "ON" switch |
| 6. Coupling | 24. Cover with gasket | 42. Level control pilots |
| 7. 220 V motor | 25. Service level outer cover | 43. Level control circuit |
| 8. Fan | 26. Safety level outer cover | |
| 9. Contactor | 27. Safety level connector | |
| | 28. Safety level connector | |
| | 29. Anti-return valve | |
| | 30. Elbow feedthrough (6 x 6) | |
| | 31. Elbow connector 1/8 x 6 | |
| | 32. Feedthrough (10 x 10) | |
| | 33. Spillage detection gauge | |
| | 34. Power supply cable with plug | |
| | 35. Hydraulic connector (10 x 1/4) | |
| | 36. Straight connector (10 x 3/8) | |