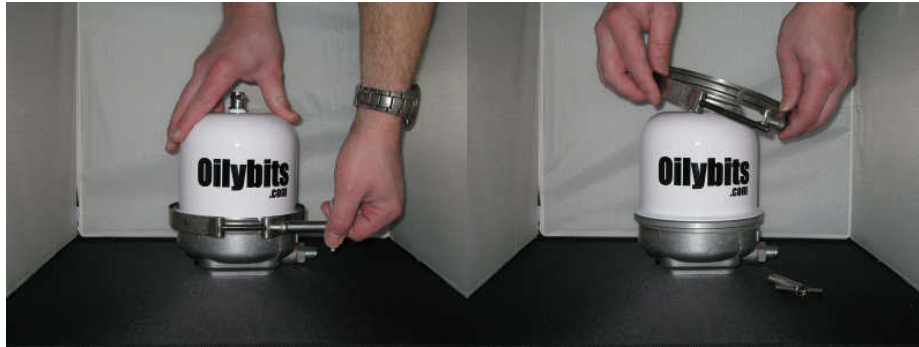


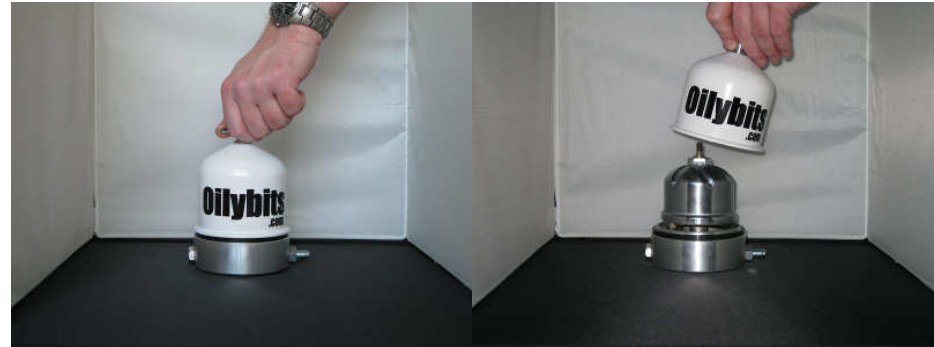
# Oilybits OB-Series Service Instructions

Common for OB Models: 020, 025, 050, 060, 100, 200, 600



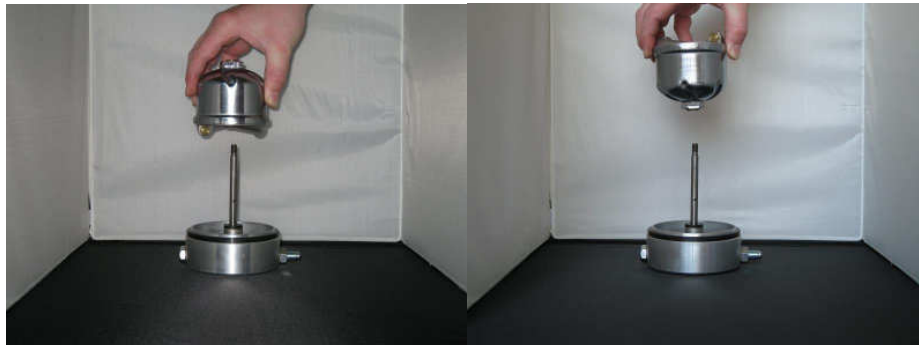
Loosen Clamp Wing Nut  
(If present on your centrifuge)

Remove Clamp  
(If present on your Centrifuge)



**Disassembly**  
Loosen Cover Nut

Remove Cover



Lift Rotor, Allow oil to drain

Invert Rotor, Allow oil to drain

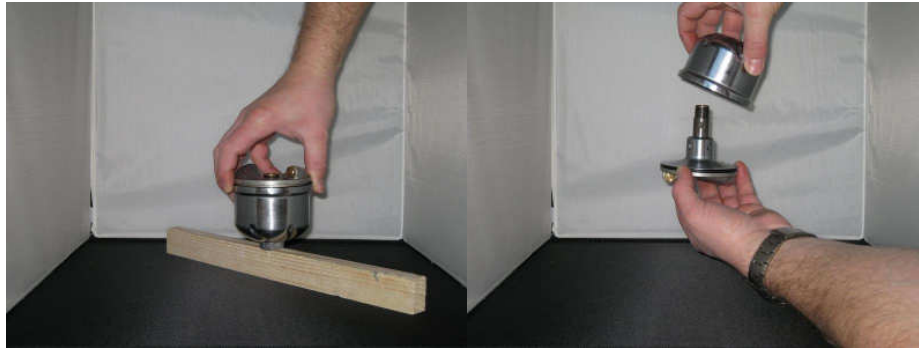


Loosen Rotor Nut with Spanner

Loosen Rotor Nut by 3 Threads  
(Do not fully remove)

# Oilybits OB-Series Service Instructions

Common for OB Models: 020, 025, 050, 060, 100, 200, 600



Invert Rotor and tap on soft surface to separate parts

Separate Rotor Cover and Base



Remove sludge with blunt blade

Remove Deflector Plate



Remove Rotor O'Ring, clean & check condition

Remove Base O'Ring, clean & check condition

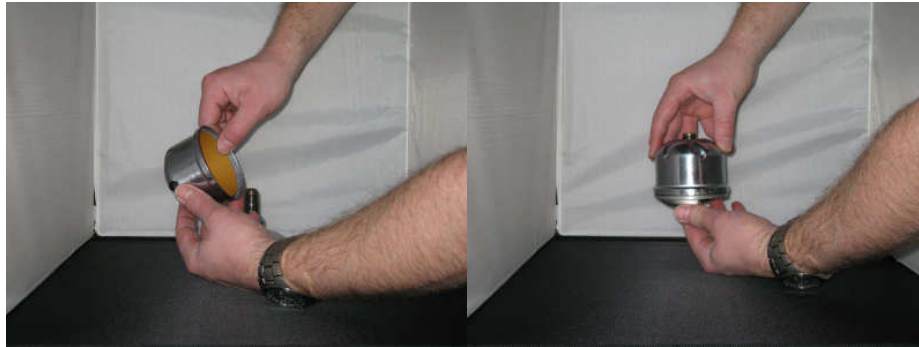


**Reassembly**  
Fit Rotor O'Ring

Insert Deflector

# Oilybits OB-Series Service Instructions

Common for OB Models: 020, 025, 050, 060, 100, 200, 600



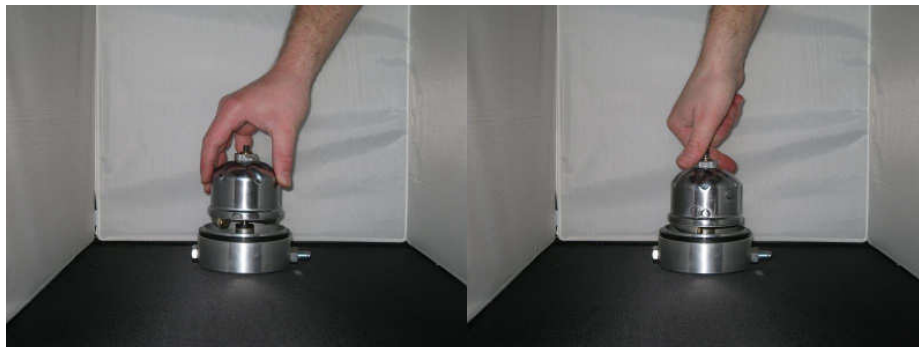
Insert Paper Insert  
(Optional)

Assemble Rotor Cover and Base



Ensure Arrow Marks match on  
Cover and Base

Hold Rotor in hand and tighten  
Top Nut with Spanner



Slide Rotor onto Rotor Shaft

Rotate by Hand to ensure free  
rotation



Fit Cover

Tighten Cover Nut by Hand  
\*Re-Fit Clamp if present

# Oilybits OB-Series Trouble Shooting Guide

Common for OB Models: 020, 025, 050, 060, 100, 200, 600

Problem	Probable cause	Action
Leakage at base of cleaner	Rectangular base gasket damaged / shrunk	Change gasket
	Bolts have loosened	Tighten bolts
Rotor does not rotate	Nozzles blocked	Open rotor and clean nozzles thoroughly
	Entry Valve Piston jammed	Entry Valve comprises 4 components, Centering Nut & Sealing Washer, Spring, and Piston. Remove in that order, piston is pushed out from centrifuge inlet side. Clean with airline, reassemble carefully
Rotor rotates but at low speed	Leakage of oil through rotor assembly	Open rotor and ensure that the rubber ring has a proper seat on rotor body and that the top cap retaining nut is tight
	Oil level in centrifuge too high	Ensure outlet hose is vertical so oil drains freely
	Bushes damaged	Purchase replacement rotor assembly
	Rotor filled with dirt	Clean rotor out
Abnormal vibrations of centrifuge cleaner	Mismatch between arrow marks on rotor cover and rotor (if present)	Open rotor and reassemble it properly
	Rotor cap not correctly seated or top nut loose	Open rotor and reassemble it properly
Cleaner does not collect any dirt	Rotor not rotating at desired speed.	See points above. Check oil pressure and for blocks in filters upstream of oil pump