



# E AC PUMPS 80 - E 120

**EN.** Diesel transfer electric pump. Displacement, self-priming rotary electric vane pumps. Fitted with by-pass valve and elevated reliability seal even at low working temperatures. Compact and easy to install they are ideal for dispensers, fixed fuel transferring systems and other industrial applications.

Sturdy cast iron structure, vane pump with sintered steel rotor and acetal resin vanes, induction motor with aluminium casing. Suitable for continuous use with thermal motor overload protection.

**ES.** *Electrobombas para el trasiego de gasóleo. Rotativas, volumétricas y autocebantes de paletas. Dotadas de válvula de by-pass. Estanqueidad de elevada fiabilidad incluso en usos con bajas temperaturas. Compactas y fáciles de instalar, son ideales para surtidores e instalaciones fijas para el trasiego de carburante y otras aplicaciones industriales.*

*Estructura robusta de fundición, bomba de paletas con rotor de acero sinterizado y paletas de resina acetálica, motor de inducción con carcasa de aluminio. Utilizables con funcionamiento continuo y dotadas de protección térmica para sobrecarga del motor.*

**PT.** *Electrobombas para transferência de gasóleo. Rotatórias, volumétricas autoescorvantes com palhetas. Equipadas com válvula by-pass. Blindagem de alta confiança mesmo se utilizadas com temperaturas baixas. Compactas e fáceis de instalar, são ideais para distribuidores e sistemas fixos de transferência de carburante e outras aplicações industriais.*

Estrutura robusta de ferro gusa, bomba de palhetas com rotor de aço sinterizado e palhetas de resina de acetal, motor de indução com cárter de alumínio. Podem ser utilizadas em contínuo com protecção térmica contra sobrecarga do motor.

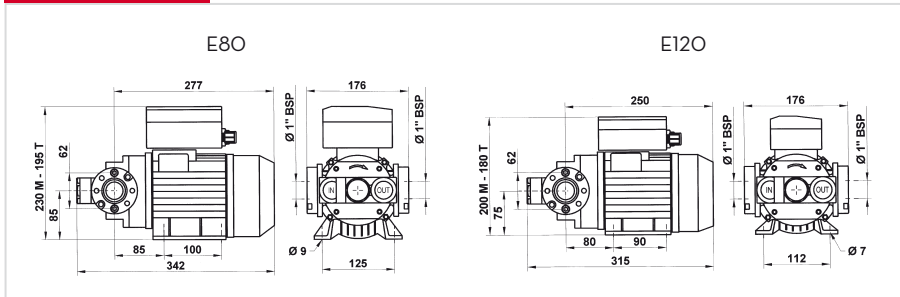
## PERFORMANCE

- Flow rate up to 100 l/min
- Continuous AC operation.
- Noise level below 70 dB

- Caudal hasta 100 l/min
- Funcionamiento continuo CA
- Nivel sonoro inferior a 70 dB

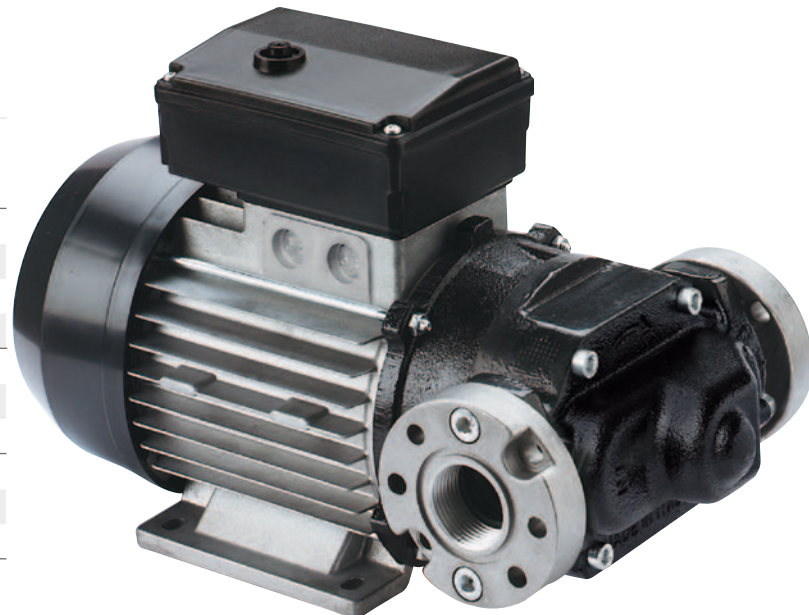
- Caudal até 100 l/min
- Funcionamento contínuo AC
- Ruído inferior a 70 dB

## DIMENSIONS



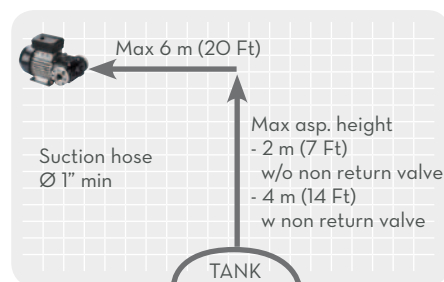
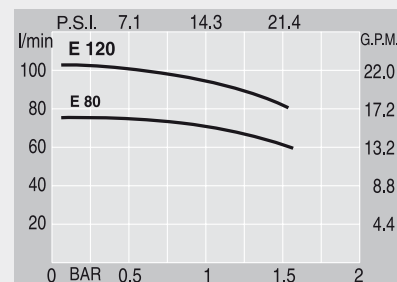
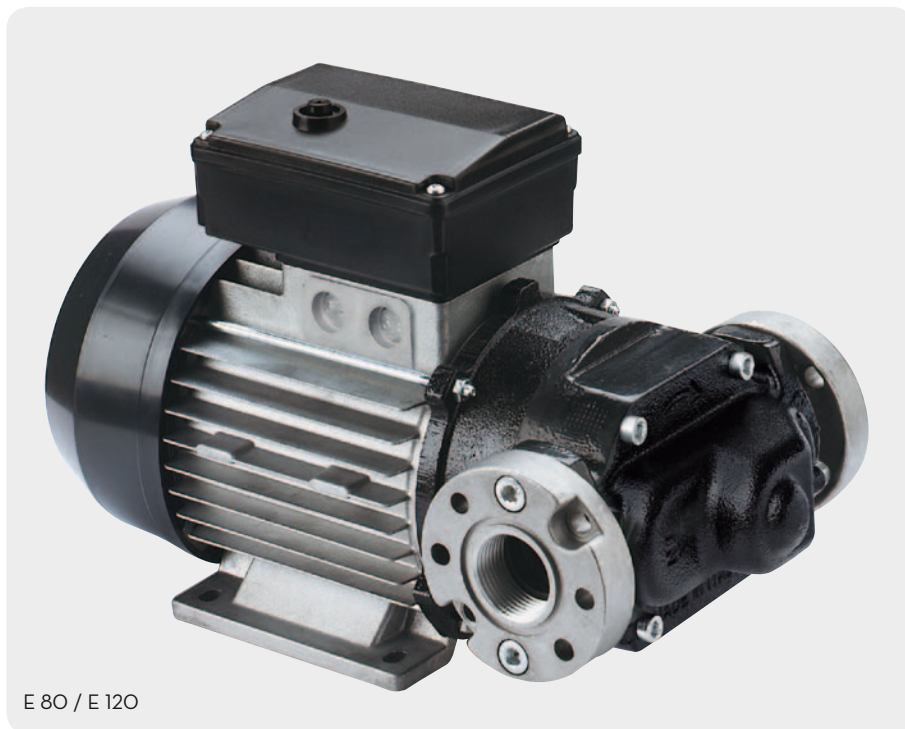
## PRODUCTS' RANGE WEIGHT AND PACKAGING

Code	Weight		Packaging		
	kg	lbs	mm	inch	pcs/box
<b>E 80</b>					
000305000	13	28,7	355x185x285	14x7,3x11,2	1
000362000	13	28,7	355x185x285	14x7,3x11,2	1
000307000	13	28,7	355x185x285	14x7,3x11,2	1
<b>E 120</b>					
000326000	15,6	34,4	355x185x285	14x7,3x11,2	1
000312000	15,6	34,4	355x185x285	14x7,3x11,2	1
<b>P8OEXX</b>					
F0031900A	26,5	58,4	650x290x300	25,6x11,4x11,8	1
F0031700A	26,5	58,4	650x290x300	25,6x11,4x11,8	1



**Flow-rate**

up to  
**100** l/min  
(up to 26 gpm)



**FEATURES**



**ON DEMAND**



Version with EEX motor

**PRODUCTS' RANGE TECHNICAL DATA**

Code	Description	Fluids type	Flow-rate		Voltage				rpm	Inlet Outlet BSP	Flange connection	Bypass valve	Inlet filter
			l/min	gpm	Singlephase motor V/Hz	Threephase motor V/Hz	Power Watt	Amp. max.					
<b>E 80</b>													
000305000	E 80 M	D	70	18	230/50	-	700	3,5	1400	1"	YES	YES	NO
000362000	E 80 M (110 V)	D	90	24	110/60	-	800	8,3	1700	1"	YES	YES	NO
000307000	E 80 T	D	90	24	-	400/50	550	1,6	1450	1"	YES	YES	NO
<b>E 120</b>													
000326000	E 120 M	D	100	26	230/50	-	1150	5,7	1450	1"	YES	YES	NO
000312000	E 120 T	D	100	26	-	400/50	800	2,2	1450	1"	YES	YES	NO
<b>P80EEX</b>													
F0031900A	P80EEX M	D	75	20	230/50	-	750		1400	1"	YES	YES	NO
F0031700A	P80EEX T	D	75	20	-	400/50	750		1400	1"	YES	YES	NO

Upon request it is available with different voltage and frequency

DISPENSERS

PUMPS

METERS

NOZZLE METERS

NOZZLE

SPECIAL EQUIPMENTS

FLUID MONITORING

ACCESSORIES

FILTERING