



AC PUMPS PANTHER 56 - 72

EN. Diesel transfer electric pump. Displacement, self-priming rotary electric vane pumps. Fitted with by-pass valve and elevated reliability seal even at low working temperatures. Compact and easy to install they are ideal for dispensers, fixed fuel transferring systems and other industrial applications. Sturdy cast iron structure, vane pump with sintered steel rotor and acetel resin vanes, induction motor with aluminium casing. Suitable for continuous use with thermal motor overload protection.

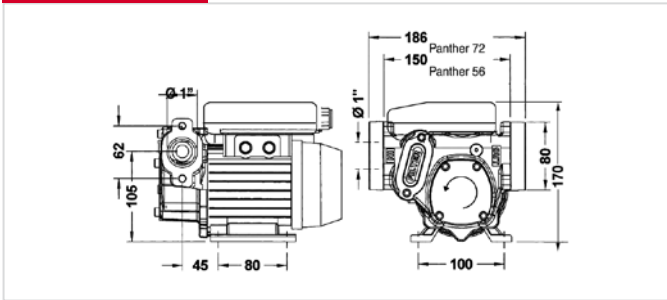
ES. Electrobombas para el trasiego de gasóleo. Rotativas, volumétricas y autocebantes de paletas. Dotadas de elevada fiabilidad incluso en usos con bajas temperaturas. Compactas y fáciles de instalar, son ideales para surtidores e instalaciones fijas para el trasiego de carburante y otras aplicaciones industriales. Estructura robusta de fundición, bomba de paletas con rotor de acero sinterizado y paletas de resina acetálica, motor de inducción con carcasa de aluminio. Utilizables con funcionamiento continuo y dotadas de protección térmica para sobrecarga del motor.

PT. Electrobombas para transferência de gasóleo. Rotatórias, volumétricas autoescorvantes com palhetas. Equipadas com válvula by-pass. Blindagem de alta confiança mesmo se utilizadas com temperaturas baixas. Compactas e fáceis de instalar, são ideais para distribuidores e sistemas fixos de transferência de carburante e outras aplicações industriais. Estrutura robusta de ferro gusa, bomba de palhetas com rotor de aço sinterizado e palhetas de resina de acetel, motor de indução com cárter de alumínio. Podem ser utilizadas em contínuo com protecção térmica contra sobrecarga do motor.

PERFORMANCE

- Flow rate up to 72 l/min
- Continuous AC operation.
- Noise level below 75 dB
- Incorporated filter
- Caudal hasta 72 l/min
- Funcionamiento continuo CA
- Nivel sonoro inferior a 75 dB
- Filtro incorporado
- Caudal até 72 l/min
- Funcionamento contínuo AC
- Ruído inferior a 75 dB
- Filtro incorporado

DIMENSIONS



PRODUCTS' RANGE WEIGHT AND PACKAGING

Code	Weight		Packaging		
	kg	lbs	mm	inch	pcs/box
PANTHER 56					
F00730000	7,4	16,3	345X175X255	13,6x6,9x10	1
000731000	7,4	16,3	345X175X255	13,6x6,9x10	1
000730070	7,4	16,3	345X175X255	13,6x6,9x10	1
F00730380	7,4	16,3	345X175X255	13,6x6,9x10	1
000733000	7,4	16,3	345X175X255	13,6x6,9x10	1
000734000	7,4	16,3	345X175X255	13,6x6,9x10	1
PANTHER 72					
000732000	7,9	17,4	345X175X255	13,6x6,9x10	1
000735000	7,9	17,4	345X175X255	13,6x6,9x10	1



PANTHER 56

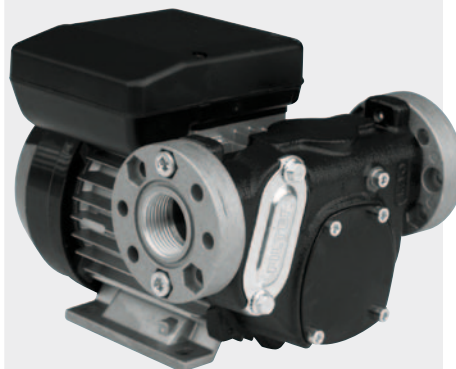
Flow-rate

up to
72 l/min
(up to 19 gpm)

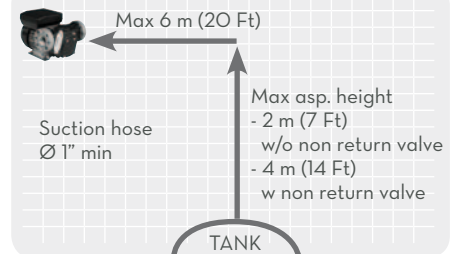
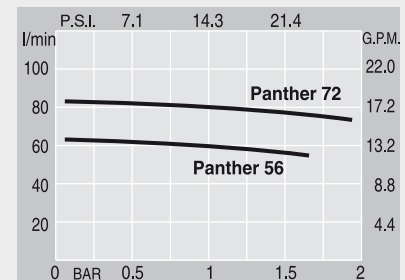
PIUSI®



PANTHER 56
THREADED PORTS
(flange not included)



PANTHER 72
(threaded flange included)



FEATURES

Vane rotors



Filter included



ON REQUEST

Flange connect. (available)



PRODUCTS' RANGE TECHNICAL DATA

Code	Description	Fluids type	Flow-rate		Voltage				rpm	Inlet Outlet BSP	Flange connection	Bypass valve	Inlet filter
			l/min	gpm	Singlephase motor V/Hz	Threephase motor V/Hz	Power Watt	Amp. max.					
PANTHER 56													
F00730000	Panther 56 230/50	D	56	15	230/50	-	600	3	2900	1"	-	YES	YES
000731000	Panther 56 230/60	D	68	18	230/60	-	800	3,9	3400	1"	-	YES	YES
000730070	Panther 56 120/60	D	56	15	120/60	-	800	7,5	3400	1"	-	YES	YES
F00730380	Panther 56 110/50	D	56	15	120/50	-	600	5,5	2800	1"	-	YES	YES
000733000	Panther 56 400/50	D	56	15	-	400/50	500	1,3	2900	1"	-	YES	YES
000734000	Panther 56 400/60	D	68	18	-	400/60	500	1,4	3400	1"	-	YES	YES
PANTHER 72													
000732000	Panther 72 230/50	D	72	19	230/50	-	850	4,2	2900	1"	YES	YES	YES
000735000	Panther 72 400/50	D	72	19	-	400/50	550	1,6	2900	1"	YES	YES	YES

Upon request it is available with different voltage and frequency