

---

# RIDART

Valves and fuel handling

## CATALOGUE

### 2023

---



# CERTIFICATION



ISO 9001:2015

---



Eurofins Product Testing Italy S.r.l.

---



TUV Rheinland Berlin Brandenburg

---



Politecnico di Milano – quality system

---



Istituto Giordano

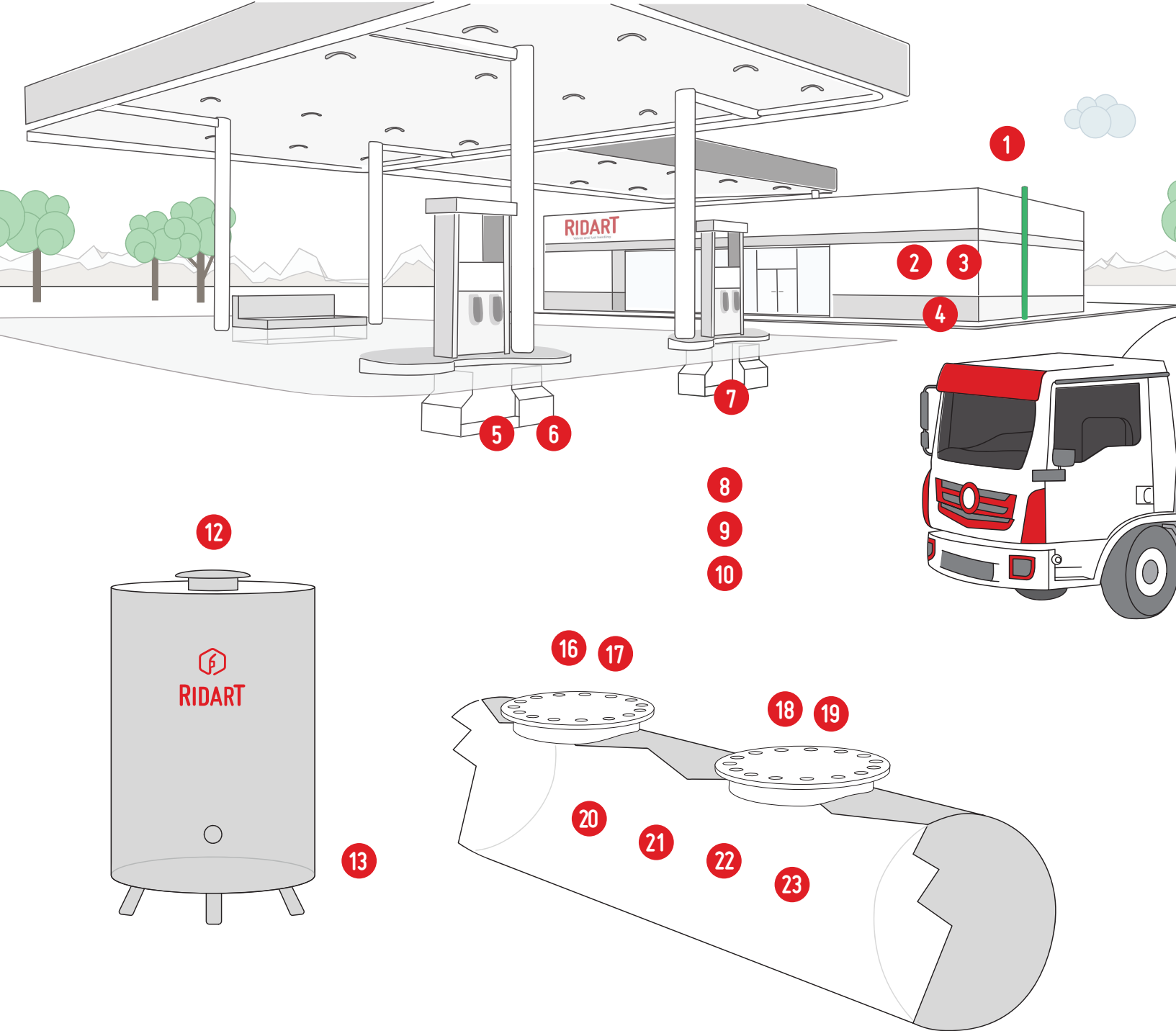
---



Ministry of Internal Affairs

---





# Tank Protection Valves



1 - Model 197 EN P

Pressure Vacuum Vent with End Of Line Deflagration flame arrester

**Threaded connection:** 2" - 4" - 6"

**Materials:** Aluminium / Stainless Steel / PTFE Coated



3 - Model 1534 EN P

Vapor Recovery Adaptor with In-Line Deflagration Flame Arrester

**Threaded connection:** 3" F x 3" CamLock M

**Materials:** Aluminium



5 - Model 23/26

Shut-Off Valve

**Threaded connection:** 1" 1/2 BSPP

**Materials:** Cast Iron / PTFE coated



7 - Model 31

Shear Check Valve

**Threaded connection:** 1" 1/2 BSPP

**Materials:** Stainless Steel



2 - Model 1524 EN P

Vapor Recovery Adaptor with In-Line Deflagration Flame Arrester

**Threaded connection:** 3" F x 4" CamLock M

**Materials:** Aluminium



4 - Model 1520

Vapor Recovery Coupler

**Threaded connection:** 4" CamLock x 2" 1/2 F + 3" M BSPP

**Materials:** Aluminium



6 - Model 15

Multifunction Check Valve

**Threaded connection:** DN40

**Materials:** Aluminium



8 - Model 180 EN P

In Line Deflagration Flame Arrester

**Threaded connection:** 1" - 2" - 4"

**Materials:** Brass / Stainless Steel / PTFE Coated



13 – Model 1510

Anti-Siphon Valve

**Threaded connection:** 1"1/2 BSPP

**Materials:** Aluminium / PTFE Coated



15 – Model 1527 L

Api Adapter with Lever

**Threaded connection:** API RP 1004 FLANGED 4" TTMA

**Materials:** Aluminium



14 – Model 1527

Api Adapter

**Threaded connection:** API RP 1004 FLANGED 4" TTMA

**Materials:** Aluminium



16 – Model 1450 A

Male CamLock Coupler

**Threaded connection:** CamLock BSPP from 1" to 4"

**Materials:** Aluminium / Stainless Steel



17 – Model 93 CL

Vapor Stop CamLock

**Threaded connection:** 4" CamLock

**Materials:** Aluminium / PTFE Coated



19 – Model 1600

Quick-dry Male Coupling

**Threaded connection:** 2" – 2"1/2 – 3"

**Materials:** Aluminium / Stainless Steel



18 – Model 1605

Quick-Dry Female Hose Coupling

**Threaded connection:** 2" – 3"

**Materials:** Aluminium / PTFE Coated  
Stainless Steel



20 – Model 442

Overfill Prevention Valve

**Threaded connection:** 3" BSPP

**Materials:** Aluminium / Stainless Steel / PTFE Coated

# ISO 9001: 2015



9 – Model 181 EN P

In Line Deflagration Flame Arrester

**Threaded connection:** 3" BSPP

**Materials:** Brass / Stainless Steel / PTFE Coated



11 – Model 197 AT new

Pressure Vacuum Vent with Roll-Over Protection

**Threaded connection:** FLANGED DN50

**Materials:** Aluminium



21 – Model 442 B

Overfill Prevention Valve

**Threaded connection:** 3" – 4" BSPP

**Materials:** Aluminium / Stainless Steel / PTFE Coated



23 – Model 442 OR

Horizontal Overfill Prevention Valve

**Threaded connection:** 3" BSPP

**Materials:** Aluminium



10 – Model 330 EN P

In Line Deflagration Flame Arrester

**Threaded connection:** 1" – 2" – 3" – 4" BSPP

**Materials:** Aluminium / Stainless Steel / PTFE Coated



12 – Model 55B

Adjustable Angle Check Valve

**Threaded connection:** BSPP 1" – 2"

**Materials:** PTFE coated / Brass and Anodized Aluminium



22 – Model 442 S

Short Overfill Prevention Valve

**Threaded connection:** 3" BSPP

**Materials:** Aluminium



24 – Model 1521

Female Api Adapter with Lever

**Threaded connection:** API RP 1004 FLANGED 4" TTMA

**Materials:** Aluminium

# CONTENTS

## 1. STORAGE TANK EQUIPMENT

|                                  |         |
|----------------------------------|---------|
| 1.1 LOADING LINE                 | PAGE 6  |
| 1.2 VAPOUR RECOVERY STAGE 1      | PAGE 11 |
| 1.3 DEFLAGRATION FLAME ARRESTERS | PAGE 13 |
| 1.4 SUCTION LINE                 | PAGE 14 |
| 1.5 VAPOUR RECOVERY STAGE 2      | PAGE 17 |
| 1.6 GAUGING ACCESSORIES          | PAGE 18 |
| 1.7 STAINLESS STEEL              | PAGE 20 |
| 1.8 TANK MONITORING              | PAGE 22 |

## 2. TANK TRUCK EQUIPMENT

|                                     |         |
|-------------------------------------|---------|
| 2.1 FUEL TRANSFER VALVES            | PAGE 23 |
| 2.2 THREADED CAPS and GFR COUPLINGS | PAGE 26 |
| 2.3 TW COUPLINGS                    | PAGE 27 |
| 2.4 GUILLEMIN COUPLINGS             | PAGE 28 |
| 2.5 CAMLOCK COUPLINGS               | PAGE 29 |

## 3. FLANGES AND ACCESSORIES

PAGE 30

## 4. BALL VALVES

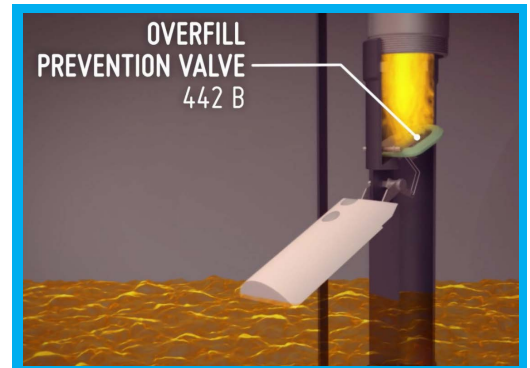
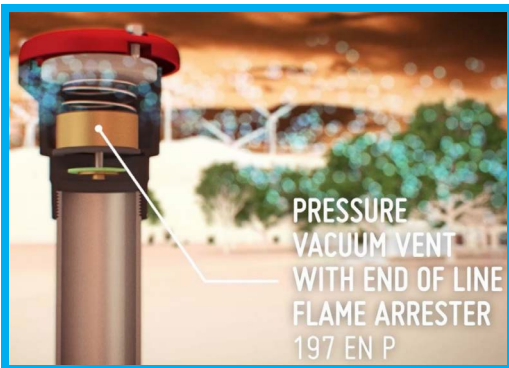
PAGE 31

## 5. VALVES FOR FUEL DISPENSERS

|  |         |
|--|---------|
| 5.1 FLEXIBLE HOSES                     | PAGE 32 |
| 5.2 FILTERS, FILTER SUPPORT, HOSE MAST | PAGE 34 |
| 5.3 FITTINGS FOR FUEL HOSES            | PAGE 35 |

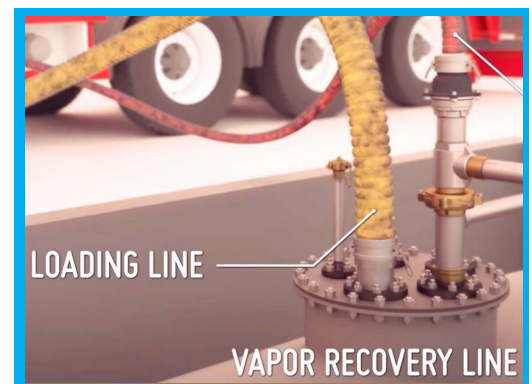
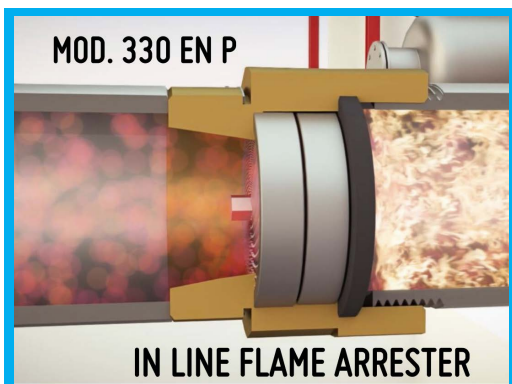
## 6. VALVES FOR ABOVEGROUND TANKS

PAGE 36



# Quick guide on key products

| Description                 | Page     | Reference   |
|-----------------------------|----------|---|
| Adjustable check valve      | 16, 37   | 55, 55B, 60B                                      |
| Angle check valve           | 14, 21   | 600T, 606H, 62, 62R, 60SS                         |
| Anti-siphon valve           | 37       | 1510, 21A, 60B, 55B                               |
| Api couplings               | 24       | 1521, 1527, 1526                                  |
| Ball float vent valve       | 17       | 1010, 1010ENP, 1015                               |
| Break away valve            | 35       | 1370, 1370E                                       |
| Check valve                 | 14, 15   | 21, 60, 62, 11, 12, 15                            |
| Deflagration flame arrester | 13,20    | 180ENP, 181ENP, 330ENP, 182ENP, 425ENP            |
| Drop tube diffuser          | 10       | 102, 103  |
| Emergency vent              | 20, 36   | 191, 193  |
| End-of line flame arrester  | 11,12,21 | 197 ENP VENT, 197 ENP, 197SM, 197ENP SS           |
| Extractor fitting           | 17       | 1531  |
| Foot valve                  | 14       | 10  |
| Gauging plug                | 19       | 135, 1500, 1505                                   |
| Hose mast                   | 34       | 1380, 1390  |
| In-line flame arrester      | 13, 20   | 180ENP, 181ENP, 330ENP, 182ENP, 425ENP            |
| Loading coupler             | 25       | 1526, 1526R                                       |
| Overfill prevention valve   | 8,9,20   | 442, 442B, 442S, 4420R, 446, 440B, 440, 444A, 445 |
| Pressure vacuum vent        | 11,12,21 | 197, 197 ENP, 197SM                               |
| Quick dry coupling          | 23       | 1605, 1600, 1601, 1602                            |
| Shear valve                 | 16,17,20 | 25, 30, 31SS                                      |
| Shut-off valve              | 16       | 23, 26, 27, 28                                    |
| Swivel                      | 23, 35   | 230B, 230   |
| Vapour recovery adapter     | 12       | 1524ENP, 1534ENP, 1535, 1525VR                    |
| Vent                        | 11       | 190, 195, 196, 197 ENP                            |



# 1. STORAGE TANK EQUIPMENT

## 1.1 LOADING LINE



93

93 CL

### Vapour stop device



Installed into the loading pipe 3" or 4"  
When cap is unscrewed, the valve remains closed  
Flow rate: 980 l/min  
Thread: BSP ISO 228-1

CE  II 3 G

| Art.No.   | Size              |
|-----------|-------------------|
| 93-80     | 3"                |
| 93-100    | 4"                |
| 93-100 CL | 4" F x 4" Camlock |

2000VK

### Quick adapter EN 14420-6



Body: brass  
Gasket: elastopal  
Thread: BSP ISO 228-1

CE  II 2 G

| Art.No.   | Size        |
|-----------|-------------|
| VK50-1 OT | 2" F x 2" R |
| VK80-1 OT | 3" F x 3" R |
| VK100-1OT | 4" F x 4" R |

2000GD

### Gasket for adapter VK



| Art.No. | Size                    |
|---------|-------------------------|
| GD50-1  | 60 x 49 x2 elastopal    |
| GD50-2  | 60 x 49 x 2 PTFE        |
| GD80-1  | 88 x 77 x 3 elastopal   |
| GD80-2  | 88 x 77 x 3 PTFE        |
| GD100-1 | 114 x 100 x 3 elastopal |
| GD100-2 | 114 x 100 x 3 PTFE      |

2015TW

### Gasket for cap MB

| Art.No. | Size               |
|---------|--------------------|
| TW50-1  | 61,5 x 49 x 5 NBR  |
| TW50-2  | 60 x 49 x 5 viton® |
| TW80-1  | 92 x 77 x 6 NBR    |
| TW80-2  | 92 x 77 x 6 viton® |
| TW100-1 | OR100 x 7 NBR      |
| TW100-2 | OR 100 x 7 viton®  |

2015MB

### Female cap EN 14420-6



Body: brass (OT), aluminium (AL)  
Gasket: NBR, \*Viton  
The chain is included

CE  II 2 G

| Art.No.   | Size |
|-----------|------|
| MB50 AL   | 2" R |
| MB80 AL   | 3" R |
| MB100 AL* | 4" R |
| MB50 OT   | 2" R |
| MB80 OT   | 3" R |

1550

### Symmetrical coupling

#### Female threaded



Body: aluminium (AL), brass (OT)  
Thread: BSP ISO 228-1

CE  II 2 G

| Art.No.     | Size |
|-------------|------|
| 1550DN80 AL | 3"   |
| 1550DN80 OT | 3"   |

1555

### Symmetrical coupling

#### Male threaded



Body: aluminium (AL), brass (OT)  
Thread: BSP ISO 228-1

CE  II 2 G

| Art.No.     | Size |
|-------------|------|
| 1555DN80 AL | 3"   |
| 1555DN80 OT | 3"   |

# 1. STORAGE TANK EQUIPMENT

## 1.1 LOADING LINE

1560

### Lockable plug



Body: aluminium (AL)

CE II 2G

| Art.No.     | Size   |
|-------------|--------|
| 1560DN80 AL | 3" R   |
| 1560-02     | gasket |

1565

### Symmetrical plug



Body: aluminium (AL), brass (OT)

CE II 2G

| Art.No.     | Size   |
|-------------|--------|
| 1565DN80 AL | 3" R   |
| 1565DN80 OT | 3" R   |
| 1560-02     | gasket |

110

### Plug for padlock



Body: Brass  
Thread: BSP ISO 228-1  
Gasket: NBR

| Art.No. | Size                |
|---------|---------------------|
| 086740  | 2" F x 2" 1/2 F     |
| 086730  | 2" 1/2 F x 2" 1/2 F |

139

### Threaded coupling with a cap and a lock



Body: brass  
Thread: BSP ISO 228-1  
Gasket: Viton®

\*available on request

CE II 2G

| Art.No. | Size |
|---------|------|
| 139-50* | 2" F |
| 139-80* | 3" F |

480

### Fastenable closing for loading line



Material: painted steel

| Art.No. | Size  |
|---------|-------|
| 480-01  | DN 80 |

828

### Plugging bored valve for pressure test



Ball valve and washer material: brass  
Rubber expansible cylinder  
Shaft material: steel

Minimum order: 10 pieces

| Art.No. | Size  |
|---------|-------|
| 8280010 | DN 40 |
| 8280011 | DN 50 |
| 8280012 | DN 80 |



# 1. STORAGE TANK EQUIPMENT

## 1.1 LOADING LINE



442 B



### Overfill prevention valve

Two stage positive shut-off  
Body: aluminium  
Pressure: 8 bar (3"), 6 bar (4")  
Thread: BSP ISO 228-1

**EN ISO 13616-1**  II 1G Ex h IIB T6 Ga  
**EN ISO 80079-36** 

| Art.No.     | Size | Flow rate     |
|-------------|------|---------------|
| 442B-80 AL  | 3" F | 60-900 l/min  |
| 442B-100 AL | 4" F | 60-1400 l/min |

442-1



### Overfill prevention valve (vertical float)

Two stage positive shut-off  
Body: aluminium  
Pressure: 8 bar  
Thread: BSP ISO 228-1

**EN ISO 13616-1**  II 1G Ex h IIB T6 Ga  
**EN ISO 80079-36** 

**NEW**


| Art.No.        | Size | Flow rate    |
|----------------|------|--------------|
| 442-80 AL      | 3" F | 60-900 l/min |
| 442-80 AL PTFE | 3" F | 60-900 l/min |

446



### Overfill prevention valve

Two stage positive shut-off  
Body: aluminium  
Pressure: 4 bar  
Thread: BSP ISO 228-1

  II 3G

| Art.No.   | Size | Flow rate    |
|-----------|------|--------------|
| 446-50 AL | 2" M | 60-450 l/min |
| 446-80 AL | 3" M | 60-850 l/min |

442 S



### Overfill prevention valve short version

Maximum fuel storage capacity  
Two stage positive shut-off  
Body: aluminium  
Pressure: 8 bar  
Thread: BSP ISO 228-1

**EN ISO 13616-1**  II 1G Ex h IIB T6 Ga  
**EN ISO 80079-36** 

| Art.No.    | Size | Flow rate    |
|------------|------|--------------|
| 442S-80 AL | 3" F | 60-900 l/min |

442 OR



### Overfill prevention valve horizontal

Maximum fuel storage capacity  
Two stage positive shut-off  
Body: Aluminium  
Pressure: 8 bar  
Thread: BSP ISO 228-1

**EN ISO 13616-1**  II 1G Ex h IIB T6 Ga  
**EN ISO 80079-36** 

| Art.No.     | Size | Flow rate    |
|-------------|------|--------------|
| 442OR-80 AL | 3" F | 60-900 l/min |

441



### Adapter in aluminium

| Art.No. | Size                |
|---------|---------------------|
| 094976  | 4" M BSP x 3" M BSP |

441-1



| Art.No.  | Size              |
|----------|-------------------|
| 094976-1 | 4" M BSP 3" F BSP |

440 B



**Overfill prevention valve**

Application: gravity filling  
Body: aluminium  
Maximum pressure: 0,65 bar  
Thread: BSP ISO 228-1

\*On sale while stocks last, then alternative product: 442B-100AL



| Art.No. | Size | Flow rate  |
|---------|------|------------|
| 094975  | 3" F | 700 l/min  |
| 094970* | 4" F | 1000 l/min |



**Overfill prevention valve 440B with drop tube**

Standard length of the tube: 1500 mm

Riser pipe available on request, page 10

\*On sale while stocks last, then alternative product: 442B-100AL



| Art.No. | Size |
|---------|------|
| 094974  | 3" F |
| 094969* | 4" F |

440



**Overfill prevention valve**

Application: gravity filling  
Body: aluminium  
Maximum pressure: 0,65 bar  
Thread: BSP ISO 228-1



| Art.No. | Size | Flow rate |
|---------|------|-----------|
| 092410  | 2" F | 550 l/min |
| 092380  | 3" F | 600 l/min |
| 092390  | 4" F | 800 l/min |

444 A



**Overfill prevention valve for diesel**

Application: gravity filling  
Body: aluminium  
Maximum pressure: 0,7 bar  
Thread: BSP ISO 228-1



| Art.No. | Size      | Flow rate |
|---------|-----------|-----------|
| 094979  | 3" F h.72 | 700 l/min |

445



**Overfill prevention valve for diesel**

Application: gravity filling  
Body: aluminium  
Thread: BSP ISO 228-1  
Maximum pressure: 2 bar



| Art.No. | Size | Flow rate |
|---------|------|-----------|
| 094980  | 2" M | 300 l/min |



4130

### REMOTE FILLING ADAPTER



Body: cast iron  
Thread: BSP ISO 228-1

For 4" male threaded cap see page 26 model 220 OT

CE 

| Art.No.    | Size               |
|------------|--------------------|
| 4130 DN100 | 4" F x 4" F x 4" F |

1101

### Fill cage



Body: aluminium  
Thread: BSP ISO 228-1

| Art.No. | Size | Height |
|---------|------|--------|
| 094982  | 4" M | 136 mm |

1102

### Drop tube



Body: aluminium  
Thread: Male BSP ISO 228-1 on one side

| Art.No.      | Size         |
|--------------|--------------|
| 1102-80-150  | 3" h 1500 mm |
| 1102-80-200  | 3" h 2000 mm |
| 1102-100-150 | 4" h 1500 mm |
| 1102-100-200 | 4" h 2000 mm |

1102 SUP

### Riser pipe with collar and rivets



Body: aluminium  
Thread: Male BSP ISO 228-1 on one side  
Ring + rivets art.number: 094974-05

| Art.No.         | Size         |
|-----------------|--------------|
| 1102-80-50 SUP  | 3" h 500 mm  |
| 1102-80-100 SUP | 3" h 1000 mm |
| 1102-80-150 SUP | 3" h 1500 mm |
| 1102-80-200 SUP | 3" h 2000 mm |

103

### Drop tube diffuser



Horizontal lamination flow

Body: aluminium

CE 

| Art.No. | Size | Height  |
|---------|------|---------|
| 103-50  | DN50 | 63,5 mm |

102

### Drop tube diffuser



Horizontal lamination flow

Body: aluminium  
Thread: BSP ISO 228-1

CE 

| Art.No. | Size     | Height |
|---------|----------|--------|
| 102-00  | 3" BSP F | 86 mm  |
| 102-01  | 4" BSP F | 90 mm  |

# 1. STORAGE TANK EQUIPMENT

## 1.2 VAPOUR RECOVERY STAGE 1

# RIDART

190



### Vent

Body: brass  
Thread: female BSP ISO 228-1

For protection system ATEX G IIB3 see article 197 EN-P VENT



| Art.No. | Size   |
|---------|--------|
| 086960  | 1"     |
| 086970* | 1" 1/2 |
| 087070* | 2"     |
| 087071* | 3"     |

195



### Vent

Body: aluminium  
Thread: female BSP ISO 228-1



| Art.No. | Size |
|---------|------|
| 093060  | 2"   |

196



### Vent

Body: aluminium/zinc plated iron



| Art.No. | Size  |
|---------|-------|
| 196-00  | DN 40 |
| 196-01  | DN 50 |

197



### Pressure vacuum vent

Body: aluminium  
Poppet: brass, stainless steel  
Thread: female BSP ISO 228-1

\* anodized aluminium on request



| Art.No.    | Size   | Vacuum/Pressure |
|------------|--------|-----------------|
| 094450     | 1"     | -2,5 +50 mbar   |
| 094460     | 1" 1/2 | -2,5 +50 mbar   |
| 094460-30  | 1" 1/2 | -2,5 +30 mbar   |
| 094440     | 2"     | -2,5 +50 mbar   |
| 094440-30* | 2"     | -2,5 +30 mbar   |
| 094461     | 1" 1/2 | -2,5 +10 mbar   |
| 094441     | 2"     | -2,5 +10 mbar   |

197 EN-P



### Pressure vacuum vent

#### with end of line deflagration flame arrester

Body: anodized aluminium  
Poppet material: brass, stainless steel  
Thread: NPT Female  
Flame proof element: ribbon coil stainless steel  
Ribbon coil standard gap (MESG): 0,65 mm



**NEW**

| Art.No.         | Size | Vacuum/Pressure |
|-----------------|------|-----------------|
| 197 EN P-10     | 2" F | -2,5 +10 mbar   |
| 197 EN P-14     | 2" F | -2,5 +14 mbar   |
| 197 EN P-35     | 2" F | -2,5 +35 mbar   |
| 197 EN P-50     | 2" F | -2,5 +50 mbar   |
| 197EN P-35 PTFE | 2" F | -2,5 + 35 mbar  |
| 197FA-100-35    | 4" F | -2,5 + 35 mbar  |
| 197FA-150-35    | 6" F | -2,5 + 35 mbar  |

197 EN-P VENT



### End of line flame arrester vent

Body: anodized aluminium  
No poppet or spring inside  
Thread: NPT Female  
Flame proof element: ribbon coil stainless steel  
Ribbon coil standard gap (MESG): 0,65 mm



**NEW**

| Art.No.      | Size |
|--------------|------|
| 197VA-50-00  | 2" F |
| 197VA-100-00 | 4" F |
| 197VA-150-00 | 6" F |

# 1. STORAGE TANK EQUIPMENT

## 1.2 VAPOUR RECOVERY STAGE 1



197 SM EN-P



### Pressure vacuum vent with end of line deflagration flame arrester

Body: aluminium  
Weight loaded (no spring)  
Thread: NPT  
Flame proof element: ribbon coil stainless steel  
Ribbon coil standard gap (MESG): 0,65 mm

CE ATEX equipment protection  
EN ISO 16852:2016 Ex G IIB3

| Art.No.   | Size | Vacuum/Pressure |
|-----------|------|-----------------|
| 197 SM-50 | 2" F | -10 +35 mbar    |

1524 EN-P



1534 EN-P



### Vapour recovery adaptor with in-line deflagration flame arrester

Body: aluminium  
Thread: BSP ISO 228-1  
Flame proof element: ribbon coil stainless steel  
Ribbon coil plates: 2 units  
Ribbon coil standard gap (MESG): 0,65 mm  
Gasket: Viton®  
Unidirectional

CE ATEX equipment protection  
EN ISO 16852:2016 Ex G IIB3

| Art.No.      | Size                |
|--------------|---------------------|
| 1524-01 EN P | 3"F x 4" cam-lock M |

| Art.No.      | Size                |
|--------------|---------------------|
| 1534-00 EN P | 3"F x 3" cam-lock M |

1528 CL



### Camlock cap

Body: Aluminium  
Gasket: NBR  
Brass closing clamps

CE Ex II 2G

| Art.No.   | Size     | Colour |
|-----------|----------|--------|
| 1528-08   | DN100 4" | black  |
| 1528-08 A | DN100 4" | orange |

1525 VR



### Vapour recovery adaptor

Body: aluminium  
Shaft material: stainless steel  
Thread: BSP ISO 228-1  
Gasket: Viton®

CE Ex II 2G

| Art.No.   | Size               |
|-----------|--------------------|
| 1525VR-20 | 4"cam-lock M x 2"F |
| 1525VR-10 | 4"cam-lock M x 3"F |
| 1525VR-00 | 4"cam-lock M x 4"F |

1535



### Vapour recovery adaptor

Body: aluminium  
Shaft material: stainless steel  
Thread: BSP ISO 228-1  
Gasket: Viton®

CE Ex II 2G

| Art.No. | Size               |
|---------|--------------------|
| 1535-00 | 3"cam-lock M x 3"F |

180 EN-P



In-line deflagration flame arrester

Body: brass  
Flame proof element: ribbon coil stainless steel  
Ribbon coil standard gap (MESG): 0,65 mm  
Thread: BSP ISO 228-1  
\*Bidirectional

| Art.No.      | Size      |
|--------------|-----------|
| 086920 EN P* | 1"F x 1"F |
| 086910 EN P  | 2"M x 2"F |

CE ATEX equipment protection  
EN ISO 16852:2016 Ex G IIB3

181 EN-P



In-line deflagration flame arrester

Body: brass  
Flame proof element: ribbon coil stainless steel  
Ribbon coil standard gap (MESG): 0,65 mm  
Gasket: Viton®  
Thread: BSP ISO 228-1

NEW

| Art.No.          | Size      |
|------------------|-----------|
| 086855 EN P      | 3"M x 3"F |
| 086855 EN P PTFE | 3"M x 3"F |

CE ATEX equipment protection  
EN ISO 16852:2016 Ex G IIB3

330 EN-P



In-line deflagration flame arrester

Body: brass  
Flame proof element: ribbon coil stainless steel  
Ribbon coil standard gap (MESG): 0,65 mm  
Thread: BSP ISO 228-1

Also available in stainless steel (Page 20)

| Art.No.     | Size            |
|-------------|-----------------|
| 085691 EN P | 1"M x 1"F       |
| 085694 EN P | 1"1/2M x 1"1/2F |
| 085696 EN P | 2"M x 2"F       |
| 085760 EN P | 3"M x 3"F       |
| 085790 EN P | 4"M x 4"F       |

CE ATEX equipment protection  
EN ISO 16852:2016 Ex G IIB3

182 EN-P



In-line deflagration flame arrester

Body: brass  
Flame proof element: ribbon coil stainless steel  
Ribbon coil standard gap (MESG): 0,65 mm  
Thread: BSP ISO 228-1

| Art.No.      | Size              |
|--------------|-------------------|
| 182-25T EN P | 1"F x 1"M + 1/4"F |

CE ATEX equipment protection  
EN ISO 16852:2016 Ex G IIB3

425 EN-P



In-line deflagration flame arrester

Body: aluminium  
Flame proof element: ribbon coil stainless steel  
Ribbon coil standard gap (MESG): 0,65 mm  
\*Bidirectional

| Art.No.      | Size  |
|--------------|-------|
| 425-50 EN P* | DN50  |
| 425-80 EN P  | DN80  |
| 425-150 EN P | DN150 |

CE ATEX equipment protection  
EN ISO 16852:2016 Ex G IIB3

# 1. STORAGE TANK EQUIPMENT

## 1.4 SUCTION LINE



10



### Double poppet foot valve

Body: brass, filter: inox  
 Viton® gasket on lower poppet  
 Metal seal on upper poppet  
 Thread: female BSP ISO 228-1  
 \*available on request



| Art.No.   | Size   |
|-----------|--------|
| 086040    | 1"     |
| 086060    | 1"1/2  |
| 086070    | 2"     |
| 086090    | 3"     |
| 085990    | 4"     |
| 085991*   | 4" NPT |
| 10-150-WA | 6"     |

21



### Check valve

Body: brass  
 Gasket: Viton®  
 Thread: female BSP ISO 228-1



|        |       |
|--------|-------|
| 092640 | 3/4"  |
| 092610 | 1"    |
| 092620 | 1"1/2 |
| 092630 | 2"    |
| 086220 | 2"1/2 |
| 086180 | 3"    |
| 086190 | 4"    |

40



### Male filter

Body: brass  
 Screen material: steel  
 Thread: BSP ISO 228-1

|        |       |
|--------|-------|
| 086260 | 1"    |
| 086280 | 1"1/2 |
| 086290 | 2"    |
| 086300 | 2"1/2 |
| 086310 | 3"    |
| 086320 | 4"    |

60 OT



### Angle check valve

Body: brass  
 Spring based poppet  
 Gasket: Viton®  
 Thread: BSP ISO 228-1



| Art.No. | Size    |
|---------|---------|
| 087980  | 1" F    |
| 086450  | 1"1/2 F |
| 086460  | 2" F    |

60 GH



### Angle check valve

Body: cast iron  
 Cap and poppet material: brass  
 Gasket: Viton®  
 Thread: BSP ISO 228-1



| Art.No. | Size    |
|---------|---------|
| 089900  | 1"1/2 F |
| 089920  | 2" F    |
| 089950  | 3" F    |
| 089955* | 4" F    |

62



### Angle check valve

Body: cast iron  
 Cap and poppet material: brass  
 Gasket: Viton®  
 Thread: BSP ISO 228-1



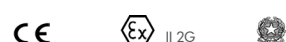
| Art.No.   | Size                     |
|-----------|--------------------------|
| 62V-40-65 | 1"1/2F x 1"1/2F x 2"1/2M |
| 62-50-65  | 2"F x 2" F + 2"1/2 M     |
| 62V-40-50 | 1"1/2 F x 1"1/2 F + 2"M  |

50



### Female filter

Body: brass  
 Thread: BSP ISO 228-1



| Art.No. | Size  |
|---------|-------|
| 086360  | 1"    |
| 086380  | 1"1/2 |
| 086390  | 2"    |
| 086400  | 2"1/2 |
| 086430  | 3"    |
| 087560  | 4"    |

# 1. STORAGE TANK EQUIPMENT

## 1.4 SUCTION LINE

60R



### Shut-off check valve

Body: brass  
Spring: stainless steel  
Gasket: Viton®  
Thread: BSP ISO 228-1

CE II 2G

| Art.No.  | Size |
|----------|------|
| 086460 R | 2" F |

11



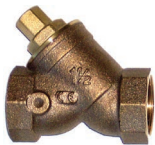
### Vertical check valve

Body: brass  
Double poppet  
Viton® gasket on lower poppet  
Metal seal on upper poppet  
Thread: BSP ISO 228-1  
\*on request

CE II 2G

| Art.No. | Size              |
|---------|-------------------|
| 086165  | 1"1/2 F x 1"1/2 F |
| 086166* | 2" F x 2" F       |

12



### Inspectionable check valve

Body: bronze  
Poppet: brass  
Gasket: Viton®  
Thread: BSP ISO 228-1  
Inspectionable without being removed

CE II 2G

| Art.No. | Size          |
|---------|---------------|
| 094620  | 1"1/2 x 1"1/2 |

15



### Under pump check valve

Body: anodized aluminium  
Gasket: Viton®  
Gravity flow rate: 190 l/min  
To be assembled with flanges on page 30

CE II 3G

| Art.No. | Size      |
|---------|-----------|
| 15-40   | d=75,5 mm |

205



### Anti-siphon valve

Body: hostaform  
Spring: stainless steel  
Gasket: O-ring Viton®  
Not suitable as check valve

CE II 2G

| Art.No. | Size    | Description      |
|---------|---------|------------------|
| 094600  | d=78 mm | with strainer    |
| 094610  | d=62 mm | with strainer    |
| 094580  | d=78 mm | without strainer |
| 094590  | d=62 mm | without strainer |

204



### Anti-siphon valve with flanges

Body: hostaform  
Flanges material: brass  
Spring: stainless steel  
Gasket: O-ring Viton®  
Assembled with bolts  
Thread: BSP ISO 228-1

| Art.No.    | Size                    |
|------------|-------------------------|
| 090950     | 1"1/2 F x 1"1/5 F       |
| 010980 FKM | gasket VITON            |
| 010980     | flange 1"1/2            |
| 010980/1   | flange with gasket seat |



# 1. STORAGE TANK EQUIPMENT

## 1.4 SUCTION LINE SUBMERSIBLE PUMP



23/26



### Emergency shut-off valve

Body: cast iron (PTFE-coating on request)  
 Internal parts: brass  
 Spring: stainless steel  
 Gasket: Viton®  
 Flow rate: 300 l/min  
 Thread: BSP ISO 228-1

For stainless steel version see Model 31 (Page 20)



UNI EN 13617-3

NEW

| Single poppet |             |                     |
|---------------|-------------|---------------------|
| Mod.          | Art.No.     | Size                |
| 23            | 090900      | 1"1/2F+2"F x 1"1/2F |
| 23            | 090900 PTFE | 1"1/2F+2"F x 1"1/2F |

| Double poppet |         |                     |
|---------------|---------|---------------------|
| Mod.          | Art.No. | Size                |
| 26            | 090905  | 1"1/2F+2"F x 1"1/2F |

27/28



### Emergency shut-off valve

Body: aluminium  
 Spring: stainless steel  
 Gasket: Viton®  
 Flow rate: 300 l/min  
 Thread: BSP ISO 228-1

\*on request



UNI EN 13617-3

| Single poppet |          |                 |
|---------------|----------|-----------------|
| Mod.          | Art.No.  | Size            |
| 28*           | 28-40-01 | 1"1/2F x 1"1/2F |

| Double poppet |          |                 |
|---------------|----------|-----------------|
| Mod.          | Art.No.  | Size            |
| 27*           | 27-40-01 | 1"1/2F x 1"1/2F |

30



### Shear check valve

Body: Aluminium  
 Internal parts: brass  
 Spring: stainless steel  
 Flow rate: 65 l/min  
 Separation force: 600 Hm  
 Gasket: Viton®  
 Thread: BSP ISO 228-1

For stainless steel version see Model 31 (Page 20)



| Art.No. | Size            |
|---------|-----------------|
| 30-40   | 1"1/2"Fx 1"1/2F |

55



### Adjustable check valve

Body: brass  
 Spring: stainless steel  
 Gasket: Viton®  
 Thread: BSP ISO 228-1



| Art.No. | Size    | Pressure       |
|---------|---------|----------------|
| 092260  | 1" F    | 0,7 - 5 bar    |
| 092250  | 1"1/4 F | 0,7 - 5 bar    |
| 092270  | 1"1/2 F | 0,7 - 3,4 bar  |
| 092280  | 2" F    | 0,75 - 3,7 bar |

832 MF

832 MM



### Braided flexible hose for high pressure

Body: stainless steel  
 Pressure: up to 35 bar  
 Couplings material: steel  
 Thread: BSP ISO 228-1



| Art.No. | Size            | Length |
|---------|-----------------|--------|
| 090225  | 1"1/2M x 1"1/2M | 300 mm |
| 090230  | 2"M x 2"M       | 350 mm |
| 090233  | 2"M x 2"M       | 500 mm |
| 090235  | 2"M x 2"M       | 600 mm |

| Art.No. | Size            | Length |
|---------|-----------------|--------|
| 090220  | 1"1/2M x 1"1/2F | 300 mm |
| 090221  | 1"1/2M x 1"1/2F | 500 mm |

832 C



### Angle flexible hose for high pressure

Body: stainless steel  
 Pressure: up to 35 bar  
 Steel coupling thread: BSP ISO 228-1  
 Brass turning coupling thread: NPT



| Art.No. | Size              | Length |
|---------|-------------------|--------|
| 090245  | 2"M NPT x 2"M BSP | 600 mm |
| 090246  | 2"M NPT x 2"F BSP | 600 mm |
| 090247  | 2"M NPT x 2"M BSP | 400 mm |

# 1. STORAGE TANK EQUIPMENT

## 1.5 VAPOUR RECOVERY STAGE 2

25



### Emergency shear valve for vapour recovery Stage 2

Body: aluminium  
Poppet material: brass  
Gasket: Viton®  
Thread: BSP ISO 228-1

| Art.No. | Size        |
|---------|-------------|
| 090915  | 1" F x 1" F |

CE 

1010 EN-P



### Ball float vent valve with in-line deflagration flame arrester

Body: aluminium (AL)  
Floating ball: PPHD  
Flame proof element: ribbon coil stainless steel  
Ribbon coil standard gap (MESG): 0,65 mm  
Unidirectional for liquid  
Bidirectional for vapour of gasoline  
Thread: BSP ISO 228-1

**NEW**

| Art.No.          | Size        | Material        |
|------------------|-------------|-----------------|
| 094940 EN P PTFE | 2" F x 2" F | PTFE            |
| 094940 EN P      | 2" F x 2" F | Aluminium       |
| 094940 SS EN P   | 2" F x 2" F | Stainless steel |

CE **ATEX equipment protection**  
**EN ISO 16852:2016** 

1010



### Ball float vent valve

Body: aluminium (AL)  
Floating ball: PPHD  
Unidirectional for liquid  
Bidirectional for vapour of gasoline  
Gasket: Viton®  
Thread: BSP ISO 228-1

| Art.No. | Size                              |
|---------|-----------------------------------|
| 094900  | 2" F x 2" F AL                    |
| 094890  | 1" 1/2 F + 2" M x 1" 1/2 F + 2" M |

CE 

1015



### Ball Float Vent Valve

Body: zinc plated steel  
Floating ball: PP/Inox  
Thread: BSP ISO 228-1

| Art.No. | Size | Height |
|---------|------|--------|
| 1015-01 | 2" M | 245 mm |
| 1015-02 | 2" M | 115 mm |

CE 

1016



### Extractor fitting

Body: aluminium  
Shaft material: brass  
Thread: BSP ISO 228-1

| Art.No. | Size        |
|---------|-------------|
| 1016-01 | 4" M x 2" F |
| 1016-02 | 3" M x 2" F |

CE 

1531



### Vent valve extractor

Material: cast iron  
Thread: BSP ISO 228-1

| Art.No. | Size                      |
|---------|---------------------------|
| 1531-01 | 4" F x 4" F x 4" M x 2" F |
| 1531-02 | 3" F x 3" F x 3" F x 2" F |

CE 

# 1. STORAGE TANK EQUIPMENT

## 1.6 GAUGING ACCESSORIES



950

### Dipsticks

Body: anodized aluminium

Marking in centimeter

Size 12 x 12 mm

Length (ex.150-250cm):

value 1 - marking up to 150 cm

value 2 - total length of the dip stick 250cm

\*bored section

\*\*solid section (on request)



| Art.No.  | Length     |
|----------|------------|
| 094690*  | 160x250 cm |
| 094780*  | 200x300 cm |
| 094710*  | 260x350 cm |
| 094720*  | 300x400 cm |
| 094725*  | 360x450 cm |
| 094730*  | 400x500 cm |
| 094735** | 160x250 cm |
| 094740** | 200x300 cm |
| 094680** | 260x350 cm |
| 094745** | 300x400 cm |
| 094755** | 360x450 cm |
| 094765** | 400x500 cm |

1501

### Dipsticks

Body: anodized aluminium

Marking in centimeter

Size 4 x 15 mm

\*stainless steel

Marking in millimeter (on request)



| Art.No. | Length     |
|---------|------------|
| 094672  | 300x400 cm |
| 094673  | 300x500 cm |
| 094675* | 150x250 cm |
| 094676* | 200x300 cm |
| 094678* | 300x400 cm |

955

### Mechanical level indicators

Thread material: polyamide

Connection thread: G1"1/2

Gasket: O-ring Viton®

Float: PE HD

Display: ABS, impact-resistant



| Art.No. | Measuring range     |
|---------|---------------------|
| 094795  | 0/1,5 mt - 0/2,5 mt |

780A

### Water detection paste



| Art.No. | Package  |
|---------|----------|
| 090000  | jar 70 g |

780C

### Fuel level detection paste



| Art.No. | Package  |
|---------|----------|
| 090070  | jar 50 g |

135



**Gauging plug**

Body: brass  
Thread: BSP ISO 228-1  
Gasket: NBR

CE Ex II 2G

| Art.No. | Size                   |
|---------|------------------------|
| 092300  | 1"F x 1"1/2"R          |
| 092301  | 1"F + 1"1/2F x 1"1/2"R |

1500



**Gauging plug**

Body: Brass  
Plug gasket: elastopal  
Gasket: O-ring Viton®  
Thread: BSP ISO 228-1

\* for dip sticks 5 x 15 mm  
\*\* for dip sticks 12 x 12 mm (minimal order requested)

CE Ex II 2G

| Art.No.  | Size          |
|----------|---------------|
| 092306*  | 1"F + 1"1/2"F |
| 092305** | 1"F + 1"1/2"F |

1505-01



**Automatic gauging plug for padlock  
For dip sticks 5 x 15 mm**

Body: brass  
Valve gasket: Viton®  
Cap gasket: NBR  
Thread: BSP ISO 228-1

CE Ex II 2G

| Art.No. | Size             |
|---------|------------------|
| 1505-01 | 1"1/2 M x 1"1/2R |

1505-03



**Sleeve 1505-01**

Body: brass  
Thread: BSP ISO 228-1

\*available on request

CE Ex II 2G

| Art.No.  | Size        |
|----------|-------------|
| 1505-03  | 1"F+ 1"1/2F |
| 1505-04* | 1"F+ 2"F    |

140



**Threaded cap with gauging plug**

Body: brass  
Gasket: NBR  
Thread: BSP ISO 228-1

CE Ex II 2G

| Art.No. | Size           |
|---------|----------------|
| 086155  | 3"F x 1"1/2 RM |

101 L



**Quick cap with gauging plug  
For padlock**

Body: brass  
Gasket: NBR  
Thread: BSP ISO 228-1

CE Ex II 2G

| Art.No. | Size |
|---------|------|
| 092322  | 3" R |
| 092323  | 4" R |

# 1. STORAGE TANK EQUIPMENT

## 1.7 STAINLESS STEEL



442-2



### Overfill prevention valve

Two stage positive shut-off  
Body: stainless steel  
Pressure: 8 bar  
Poppet: EPDM  
Thread: BSP ISO 228-1

**EN ISO 13616-1**  
**EN ISO 80079-36**

CE  II 1G Ex h IIB T6 Ga


| Art.No.   | Size | Flow rate    |
|-----------|------|--------------|
| 442-80 SS | 3" F | 60-900 l/min |

446



### Overfill prevention valve

Two stage positive shut-off  
Body: stainless steel  
Pressure: 4 bar  
Gaskets: Viton®, PTFE or EPDM (on request)  
Thread: BSP ISO 228-1

CE  II 3G

| Art.No.   | Size | Flow rate    |
|-----------|------|--------------|
| 446-50 SS | 2" M | 60-450 l/min |
| 446-80 SS | 3" M | 60-850 l/min |

330 EN-P



### In-line deflagration flame arrester

Body: Stainless steel  
Flame proof element: ribbon coil stainless steel  
Ribbon coil standard gap (MESG): 0,65 mm

CE **ATEX equipment protection**  
**EN ISO 16852:2016**  G IIB3

**NEW**

| Art.No.     | Size                |
|-------------|---------------------|
| 085692 EN P | 1" M x 1" F         |
| 085693 EN P | 1 1/2" M x 1 1/2" F |
| 085697 EN P | 2" M x 2" F         |
| 085761 EN P | 3" M x 3" F         |
| 085791 EN P | 4" M x 4" F         |

190SS



### Vent

Body: stainless steel  
Thread: BSP ISO 228-1

CE  II 2G

| Art.No.   | Size     |
|-----------|----------|
| 086970 SS | 1 1/2" F |
| 087070 SS | 2" F     |
| 087071 SS | 3" F     |

191



### Emergency vent

Body: stainless steel  
Pressure: 50 mbar  
Height: 57 mm  
Thread: BSP ISO 228-1

| Art.No.   | Size    |
|-----------|---------|
| 191-50 SS | 2" Male |

31 SS



### Shear valve

Body: Stainless steel AISI 316  
Internal parts: Stainless steel AISI 316  
Connecting bush (red): aluminium  
Flow rate: 65 l/min  
Separation force: 600 Nm  
Gasket: Viton®  
Thread: BSP ISO 228-1

CE  II 3G

**NEW**

| Art.No.        | Size                 |
|----------------|----------------------|
| 31-25-40 SS    | 1 1/2" F x 1" F      |
| 31-25-40-04 AL | Breaking bush        |
| 31-25-40-08    | Installation support |

197 ENP SS



**Pressure vacuum vent  
with end of line deflagration flame arrester**

Body: Stainless steel AISI 316  
Thread: NPT Female  
Flame proof element: ribbon coil stainless steel  
Ribbon coil standard gap (MESG): 0,65 mm  
\*No flame arrester

NEW

CE ATEX equipment protection  
EN ISO 16852:2016 Ex G IIB3

| Art.No.        | Size | Vacuum/Pressure |
|----------------|------|-----------------|
| 197 EN P-35 SS | 2" F | -2,5 +35 mbar   |
| 197 P-35 SS*   | 2" F | -2,5 +35 mbar   |
| 197FS-100-35   | 4" F | -2,5 +35 mbar   |
| 197FS-150-35   | 6" F | -2,5 +35 mbar   |

20



**Check valve**

Body: stainless steel  
Thread: BSP ISO 228-1  
Gasket: PTFE  
Opening pressure: 30 mbar

CE Ex II 2G

| Art.No. | Size    |
|---------|---------|
| 092634  | 1" F    |
| 092635  | 1"1/2 F |
| 092636  | 2" F    |

40SS



**Filter**

Body: stainless steel  
Thread: BSP ISO 228-1

| Art.No.   | Size    |
|-----------|---------|
| 086280 SS | 1"1/2 M |
| 086290 SS | 2" M    |

60SS



**Angle check valve**

Body: Stainless steel  
Gasket: Viton® (PTFE on request)  
Thread: BSP ISO 228-1

CE Ex II 2G

| Art.No.   | Size |
|-----------|------|
| 086460 SS | 2" F |

2000VK



**Quick adapter EN 14420-6**

Body: stainless steel  
Gasket: PTFE  
Thread: BSP ISO 228-1

CE Ex II 2G

| Art.No.   | Size        |
|-----------|-------------|
| VK50-1 SS | 2" F x 2" R |
| VK80-1 SS | 3" F x 3" R |
| VK100-1SS | 4" F x 4" R |

2015MB



**Female cap EN 14420-6**

Body: stainless steel  
Gasket: Hypalon®

CE Ex II 2G

| Art.No. | Size |
|---------|------|
| MB50 SS | 2" R |
| MB80 SS | 3" R |

134



**Gauging plug**

Body: stainless steel  
Gasket: PTFE  
Chain material: chrome plated steel  
Thread: BSP ISO 228-1

CE Ex II 2G

| Art.No. | Size        |
|---------|-------------|
| 134-01  | 1" F x 1" F |

# 1. STORAGE TANK EQUIPMENT

## 1.8 TANK MONITORING



1300



### Leak detector LAG 14 ER for double wall tanks monitoring

Consists of a control unit, a probe and a container for leak detection liquid

CE  II (1) G [Ex ia] IIC

| Art.No. | Description  |
|---------|--------------|
| 1300-00 | LAG 14 ER    |
| 1300-01 | Assembly kit |

1306



### Leak detection low vacuum EUROVAC NV

Dimensions: 202 x 230 x 70 mm  
Ambient temperature range: -5/+ 50 °C  
Operating pressure in interstitial space: ca.-70 mbar  
Degree of protection: IP 30 (EN 60529)

CE 

| Art.No. | Description    |
|---------|----------------|
| 1306-00 | EUROVAC NV     |
| 1306-01 | Liquid barrier |

197B2



### Safety valve for double wall tanks

Body: brass  
Spring: stainless steel  
Thread: BSP ISO 228-1  
Pressure: 0,35 bar  
Vacuum: 2,5 mbar  
Sealing: metal

| Art.No. | Size |
|---------|------|
| 094435  | 1" F |

1320



### Low/max level tank switch

Tube: stainless steel or aluminium  
Positioning by cable gland  
IP 66 protection

CE  II 1G Ex ia IIC T4/T5/T6

| Art.No.      | Height | Tank                    |
|--------------|--------|-------------------------|
| EXD 3-5      | 180 cm | 3-5 m <sup>3</sup>      |
| EXD 7        | 195 cm | 7 m <sup>3</sup>        |
| EXD 10-15-20 | 215 cm | 10-15-20 m <sup>3</sup> |
| EXD 25       | 245 cm | 25 m <sup>3</sup>       |
| EXD 30-50    | 270 cm | 30-50 m <sup>3</sup>    |

215



### Special adapter

Body: brass  
Thread: BSP ISO 228-1

| Art.No. | Size          |
|---------|---------------|
| 087225  | 4" F x 3/4" F |

SB



### Ex-d angle junction box

Body: aluminium  
Protection: IP 66  
Thread: BSP ISO 228-1

CE  IP66

| Art.No.  | Size |
|----------|------|
| EX SB 14 | 1/2" |
| EX SB 24 | 3/4" |
| EX SB 36 | 1"   |

## 2. TANK TRUCK EQUIPMENT

### 2.1 FUEL TRANSFER VALVES

# RIDART

1605



#### Quick-dry Female hose coupling

Ø 70 mm, 119 mm

Maximum pressure: 8 bar  
Gasket: Viton<sup>®</sup>, Teflon<sup>®</sup>  
Thread: BSP ISO 228-1

CE  II 3G

**NEW**

| Art.No.    | Size         | Housing         |
|------------|--------------|-----------------|
| 1605-50 AL | 2" F x 70mm  | Aluminium       |
| 1605-50 OT | 2" F x 70mm  | Brass           |
| 1605-50 SS | 2" F x 70mm  | Stainless steel |
| 1605-80 AL | 3" F x 119mm | Aluminium       |
| 1605-80 OT | 3" F x 119mm | Brass           |
| 1605-80 SS | 3" F x 119mm | Stainless steel |

1600



#### Quick-dry male coupling

Ø 70 mm

Maximum pressure: 8 bar  
Gasket: Viton<sup>®</sup>  
Thread: BSP ISO 228-1

CE  II 3G

| Art.No.    | Size | Housing         |
|------------|------|-----------------|
| 1600-50 AL | 2" F | Aluminium       |
| 1600-50 OT | 2" F | Brass           |
| 1600-50 SS | 2" F | Stainless steel |

1601



#### Quick-dry male coupling

Ø 105 mm

Maximum pressure: 8 bar  
Gasket: Viton<sup>®</sup>  
Thread: BSP ISO 228-1

\*available on request

CE  II 3G

| Art.No.     | Size     | Housing         |
|-------------|----------|-----------------|
| 1601-65 AL  | 2" 1/2 F | Aluminium       |
| 1601-65 OT  | 2" 1/2 F | Brass           |
| 1601-65 SS* | 2" 1/2 F | Stainless steel |

1602



#### Quick-dry male coupling

Ø 119 mm

Maximum pressure: 8 bar  
Gasket: Viton<sup>®</sup>  
Thread: BSP ISO 228-1

\*available on request

CE  II 3G

| Art.No.     | Size | Housing         |
|-------------|------|-----------------|
| 1602-80 AL  | 3" F | Aluminium       |
| 1602-80 BR  | 3" F | Bronze          |
| 1602-80 SS* | 3" F | Stainless steel |

230 B



#### Swivel Male-Female

Body: aluminium, brass, stainless steel  
Gasket: O-ring Viton<sup>®</sup>  
Thread: BSP ISO 228-1

| Art.No.   | Size   | Housing         |
|-----------|--------|-----------------|
| 087600    | 1" 1/2 | Brass           |
| 087610    | 2"     | Brass           |
| 087610 AL | 2"     | Aluminium       |
| 087610 SS | 2"     | Stainless steel |

1610



#### Rubber cap for quick-dry coupling

Material: EPDM  
\*Red cap



| Art.No.   | Size     |
|-----------|----------|
| 1610-50   | Ø 70 mm  |
| 1610-50N* | Ø 70 mm  |
| 1610-80   | Ø 119 mm |



## 2. TANK TRUCK EQUIPMENT

### 2.1 FUEL TRANSFER VALVES



1590



#### Drain valve

Body: aluminium  
Ball material: chrome-plated brass  
Draining capacity: 1000 l/min  
Thread: BSP ISO 228-1, 3" Male  
Suitable for quick couplings TW, Guillemin, Camlock, Cuna (on request)

\*available on request



| Art.No.  | Size       |
|----------|------------|
| 1590-00* | DN80 x 3"M |

| FLANGE   |                    |
|----------|--------------------|
| 1591-01* | UNI EN 1092-1 PN 6 |

1592



#### Drain valve with sight glass

Body: aluminium  
Ball material: chrome-plated brass  
Draining capacity: 1000 l/min  
Thread: BSP ISO 228-1, 3" Male  
Suitable for quick couplings TW, Guillemin, Camlock, Cuna (on request)

\*available on request



| Art.No.  | Size       |
|----------|------------|
| 1592-00* | DN80 x 3"M |

| FLANGE   |                    |
|----------|--------------------|
| 1591-01* | UNI EN 1092-1 PN 6 |

1521



#### Female Api adapter

Body: aluminium, steel  
Flange: 4" TTMA  
Gasket: Viton®  
Working pressure: 6 bar  
Flow rate: 150 m<sup>3</sup>/h

API RP 1004

| Art.No. | Size        |
|---------|-------------|
| 1521-00 | API RP 1004 |

1527



#### Api adapter

Body: aluminium  
Shaft: Stainless steel  
Flange: 4" TTMA  
Gasket: O-ring Viton®  
Flow rate: 2500 l/min  
Working pressure: 6 bar

API RP 1004

| Art.No. | Size        |
|---------|-------------|
| 1527-00 | API RP 1004 |

1527 L



#### Api adapter with lever

Body: aluminium  
Shaft: Stainless steel  
Flange: 4" TTMA  
Gasket: O-ring Viton®  
Flow rate: 2500 l/min  
Working pressure: 6 bar

API RP 1004

| Art.No.  | Size        |
|----------|-------------|
| 1527L-00 | API RP 1004 |

1528



#### Dust cap API RP 1004

Body: aluminium  
Lever material: brass

API RP 1004

| Art.No. | Size        |
|---------|-------------|
| 1528-01 | API RP 1004 |

1528 G



#### Dust cap API RP 1004

Body: rubber EPDM

API RP 1004

| Art.No. | Size        |
|---------|-------------|
| 1528-05 | API RP 1004 |

## 2. TANK TRUCK EQUIPMENT

### 2.1 FUEL TRANSFER VALVES

1526



#### Loading coupler

Body: aluminium  
Gasket: NBR  
Thread: BSP ISO 228-1



| Art.No. | Size             |
|---------|------------------|
| 1526-00 | 4" API F x 3" M  |
| 1526-02 | 4" API F x 3" RM |
| 1526-04 | 4" API F x 4" M  |
| 1526-07 | Viton gasket     |

1526R



#### Loading coupler with opening control

Body: aluminium  
Opening pin: stainless steel  
Gasket: NBR  
Thread: BSP ISO 228-1



| Art.No. | Size            |
|---------|-----------------|
| 1526-08 | 4" API F x 3" M |

1526G



#### Gaskets for 1526

NBR  
Viton

| Art.No. | Description  |
|---------|--------------|
| 1526-05 | NBR gasket   |
| 1526-07 | Viton gasket |

1529



#### Interlock switch

Body: aluminium  
Gasket: Viton®  
Maximum pressure: 1000 KPa

\*available on request

| Art.No.  | Size |
|----------|------|
| 1529-00* | -    |

1520



#### Vapour recovery coupler

Body: aluminium  
Opening pin material: Brass  
Thread: BSP ISO 228-1



| Art.No. | Size                         |
|---------|------------------------------|
| 1520-00 | 4" cam-lock x 2" 1/2F + 3" M |

1525



#### Vapour recovery coupler

Body: aluminium  
Thread: BSP ISO 228-1

| Art.No. | Size                 |
|---------|----------------------|
| 1525-00 | 4" cam-lock M x 2" M |

1525 VR



#### Vapour recovery adapter with check valve

Body: aluminium  
Poppet material: Aluminium  
Gasket: O-ring Viton®  
Shaft material: stainless steel



| Art.No.   | Size               |
|-----------|--------------------|
| 1525VR-00 | 4" cam-lock x 4" F |

## 2. TANK TRUCK EQUIPMENT

### 2.2 THREADED CAPS AND GFR COUPLINGS



210 OT



#### Threaded cap

Body: brass  
Thread: BSP ISO 228-1



| Art.No. | Size    |
|---------|---------|
| 087180  | 1"1/2   |
| 087190  | 2"      |
| 087200  | 2"1/2   |
| 087210  | 3"      |
| 087220  | 4"      |
| 087130  | cassoni |

210 AL



#### Threaded cap

Body: aluminium  
Thread: BSP ISO 228-1



| Art.No. | Size    |
|---------|---------|
| 087570  | 1"1/2   |
| 087580  | 2"      |
| 087280  | 2"1/2   |
| 087270  | 3"      |
| 087240  | 4"      |
| 087250  | cassoni |

220 OT



#### Male threaded cap

Body: brass  
Thread: BSP ISO 228-1

| Art.No. | Size    |
|---------|---------|
| 091490  | 2"      |
| 091495  | 2"1/2   |
| 091500  | 3"      |
| 091510  | 4"      |
| 091512  | cassoni |

220 AL



#### Male threaded cap

Body: aluminium  
Thread: BSP ISO 228-1

| Art.No. | Size    |
|---------|---------|
| 087500  | 2"      |
| 087510  | 2"1/2   |
| 087520  | 3"      |
| 087530  | 4"      |
| 087540  | cassoni |

1515



#### Threaded GFR coupling

Body: aluminium  
Thread: BSP ISO 228-1  
GFR = Ø 106



| Art.No. | Size       |
|---------|------------|
| 1515-01 | GFR x 3" M |

1516



#### Threaded GFR coupling

Body: aluminium  
Thread: BSP ISO 228-1  
GFR = Ø 106



| Art.No. | Size       |
|---------|------------|
| 1516-01 | GFR x 3" F |

1517



#### GFR cap

Body: aluminium  
Gasket: NBR  
GFR = Ø 101



| Art.No. | Size   |
|---------|--------|
| 1517-01 | GFR F  |
| 1517-02 | gasket |

2000VK



**Quick adapter EN 14420-6**

Body: brass  
Gasket: elastopal  
Thread: BSP ISO 228-1

CE  II 2G

| Art.No.   | Size        |
|-----------|-------------|
| VK50-1 OT | 2" F x 2" R |
| VK80-1 OT | 3" F x 3" R |
| VK100-1OT | 4" F x 4" R |

2015 MB



**Female cap EN 14420-6**

Body: brass (OT), aluminium (AL)  
Gasket: NBR  
Chain included

CE  II 2G

| Art.No.  | Size |
|----------|------|
| MB50 AL  | 2" R |
| MB80 AL  | 3" R |
| MB100 AL | 4" R |
| MB50 OT  | 2" R |
| MB80 OT  | 3" R |

2005 MK



**Female quick coupler female threaded EN 14420-6**

Body: brass  
Thread: BSP ISO 228-1  
Gasket: NBR

CE  II 2G

| Art.No.   | Size             |
|-----------|------------------|
| MK50-1 OT | 2" F BSP x 2" RF |
| MK80-1 OT | 3" F BSP x 3" RF |
| MK100-1OT | 4" F BSP x 4" RF |

351



**Hose coupling with spannloc groove**

Body: brass  
Thread: BSP ISO 228-1

CE  II 2G

| Art.No. | Size      |
|---------|-----------|
| 087755  | 3" M x 80 |

2035



**Spannloc clamps**

Body: aluminium

| Art.No.   | Size |
|-----------|------|
| 2035DN38  | Ø38  |
| 2035DN50  | Ø50  |
| 2035DN65  | Ø65  |
| 2035DN75  | Ø75  |
| 2035DN80  | Ø80  |
| 2035DN100 | Ø100 |

805



**High pressure clamps**

Body: stainless steel  
Width: 24 mm  
Thickness: 1,5 mm

| Art.No. | Size        |
|---------|-------------|
| 093610  | Ø52 x Ø55   |
| 093620  | Ø56 x Ø59   |
| 093630  | Ø60 x Ø66   |
| 093670  | Ø80 x Ø86   |
| 093680  | Ø85 x Ø91   |
| 093690  | Ø90 x Ø96   |
| 093720  | Ø108 x Ø116 |



1550



**Symmetrical coupling**

**Female threaded**

Body: aluminium (AL), brass (OT)  
Thread: BSP ISO 228-1

CE  II 2G

| Art.No.     | Size |
|-------------|------|
| 1550DN80 AL | 3" F |
| 1550DN80 OT | 3" F |

1555



**Symmetrical coupling**

**Male threaded**

Body: aluminium (AL), brass (OT)  
Thread: BSP ISO 228-1

CE  II 2G

| Art.No.     | Size |
|-------------|------|
| 1555DN80 AL | 3" M |
| 1555DN80 OT | 3" M |

1570



**Symmetrical hose coupling**

Body: aluminium (AL), brass (OT), bronze (BR)

CE  II 2G

| Art.No.     | Size       |
|-------------|------------|
| 1570DN80 AL | 3" R x 80  |
| 1570DN80 OT | 3" R x 80  |
| 1570DN80 BR | 3" R x 80  |
| 1560-02     | NBR gasket |

1575



**Symmetrical coupling**  
**Male threaded**

Body: aluminium (AL), brass (OT)  
Thread: BSP ISO 228-1

CE  II 2G

| Art.No.       | Size        |
|---------------|-------------|
| 1575 80-80 AL | 3" R x 3" M |
| 1575 80-80 OT | 3" R x 3" M |
| 1560-02       | NBR gasket  |

1580



**Symmetrical coupling**  
**Female threaded**

Body: aluminium (AL), brass (OT)  
Thread: BSP ISO 228-1

CE  II 2G

| Art.No.       | Size        |
|---------------|-------------|
| 1580 80-80 AL | 3" R x 3" F |
| 1580 80-80 OT | 3" R x 3" F |
| 1560-02       | NBR gasket  |

1565



**Symmetrical plug**

Body: aluminium (AL), brass (OT)

CE  II 2G

| Art.No.     | Size       |
|-------------|------------|
| 1565DN80 AL | 3" R       |
| 1565DN80 OT | 3" R       |
| 1560-02     | NBR gasket |

1560



**Lockable plug**

Body: aluminium (AL)

CE  II 2G

| Art.No.     | Size       |
|-------------|------------|
| 1560DN80 AL | 3" R       |
| 1560-02     | NBR gasket |

**1450A**

**Male coupling**

Body: aluminium  
Female thread: BSP ISO 228-1



| Art.No.     | Size  |
|-------------|-------|
| 1450A DN25  | 1"    |
| 1450A DN32  | 1"1/4 |
| 1450A DN40  | 1"1/2 |
| 1450A DN50  | 2"    |
| 1450A DN65  | 2"1/2 |
| 1450A DN80  | 3"    |
| 1450A DN100 | 4"    |

**1460D**

**Female coupling**

Body: aluminium  
Female thread: BSP ISO 228-1



| Art.No.     | Size  |
|-------------|-------|
| 1460D DN25  | 1"    |
| 1460D DN32  | 1"1/4 |
| 1460D DN40  | 1"1/2 |
| 1460D DN50  | 2"    |
| 1460D DN65  | 2"1/2 |
| 1460D DN80  | 3"    |
| 1460D DN100 | 4"    |

**1465B**

**Female coupling**

Body: aluminium  
Male thread: BSP ISO 228-1



| Art.No.     | Size  |
|-------------|-------|
| 1465B DN25  | 1"    |
| 1465B DN32  | 1"1/4 |
| 1465B DN40  | 1"1/2 |
| 1465B DN50  | 2"    |
| 1465B DN65  | 2"1/2 |
| 1465B DN80  | 3"    |
| 1465B DN100 | 4"    |

**1470F**

**Male coupling**

Body: aluminium  
Male thread: BSP ISO 228-1



| Art.No.     | Size  |
|-------------|-------|
| 1470F DN25  | 1"    |
| 1470F DN32  | 1"1/4 |
| 1470F DN40  | 1"1/2 |
| 1470F DN50  | 2"    |
| 1470F DN65  | 2"1/2 |
| 1470F DN80  | 3"    |
| 1470F DN100 | 4"    |

**1480L**

**Female cap**

Body: aluminium  
Gasket: NBR



| Art.No.     | Size  |
|-------------|-------|
| 1480L DN25  | 1"    |
| 1480L DN32  | 1"1/4 |
| 1480L DN40  | 1"1/2 |
| 1480L DN50  | 2"    |
| 1480L DN65  | 2"1/2 |
| 1480L DN80  | 3"    |
| 1480L DN100 | 4"    |

**1475E**

**Male hose coupling**

Body: aluminium



| Art.No.     | Size  |
|-------------|-------|
| 1475E DN25  | 1"    |
| 1475E DN32  | 1"1/4 |
| 1475E DN40  | 1"1/2 |
| 1475E DN50  | 2"    |
| 1475E DN65  | 2"1/2 |
| 1475E DN80  | 3"    |
| 1475E DN100 | 4"    |

**1455P**

**Male plug**

Body: aluminium



| Art.No.     | Size  |
|-------------|-------|
| 1455P DN25  | 1"    |
| 1455P DN32  | 1"1/4 |
| 1455P DN40  | 1"1/2 |
| 1455P DN50  | 2"    |
| 1455P DN65  | 2"1/2 |
| 1455P DN80  | 3"    |
| 1455P DN100 | 4"    |

**1485C**

**Female hose coupling**

Body: aluminium



| Art.No.     | Size  |
|-------------|-------|
| 1485C DN25  | 1"    |
| 1485C DN32  | 1"1/4 |
| 1485C DN40  | 1"1/2 |
| 1485C DN50  | 2"    |
| 1485C DN65  | 2"1/2 |
| 1485C DN80  | 3"    |
| 1485C DN100 | 4"    |



1187 OT



#### Female square flange

Body: brass  
Thread: BSP ISO 228-1

| Art.No.     | Size   |
|-------------|--------|
| 090760-1 OT | 1" 1/2 |
| 090790-1 OT | 2"     |
| 090850-1 OT | 3"     |

1189 OT

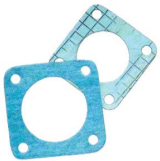


#### Male square flange

Body: brass  
Thread: BSP ISO 228-1

| Art.No.     | Size   |
|-------------|--------|
| 090750-1 OT | 1" 1/2 |
| 090780-1 OT | 2"     |
| 090840-1 OT | 3"     |

1183 OT



#### Gasket for brass flange

Omnia blu  
Asbestos free

| Art.No. | Size   |
|---------|--------|
| 090751  | 1" 1/2 |
| 090781  | 2"     |
| 090841  | 3"     |



#### Triangle flange

Body: brass  
Thread: BSP ISO 228-1

Can be used in fuel dispensers with valve Mod.15

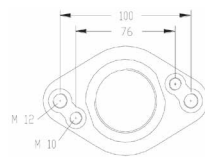
| Art.No.    | Size         |
|------------|--------------|
| 010980     | 1" 1/2       |
| 010980 FKM | Viton gasket |
| 010980 NBR | NBR gasket   |

831



#### Flange

Body: brass (OT), aluminium (AL)



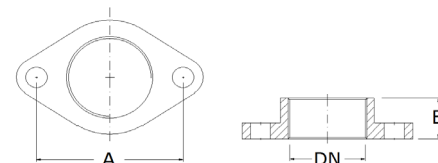
| Art.No.   | Size       |
|-----------|------------|
| 831-01 OT | 1" 1/2     |
| 831-01 AL | 1" 1/2     |
| 831-05    | NBR gasket |

830/8



#### Flange

Body: brass  
Thread: BSP ISO 228-1



| Art.No.  | Size                  |
|----------|-----------------------|
| 081220   | DN 1" 1/2 x A98 x B28 |
| 081221   | DN 2" x A98 x B28     |
| 081260   | cork gasket (A98)     |
| 081270   | NBR gasket A98        |
| 090373   | DN 1" 1/2 x A80 x B25 |
| 090373GS | cork gasket (A80)     |
| 090373CV | viton gasket (A80)    |

1165



#### Flow separator

Body: steel  
\*Stainless steel

| Art.No.   | Size   |
|-----------|--------|
| 090757    | 1" 1/2 |
| 090787    | 2"     |
| 090847    | 3"     |
| 090787-1* | 2"     |

390



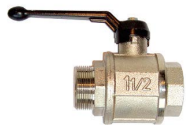
**Ball valve Male-female**

Body: chrome plated brass  
 Lever material: aluminium  
 Thread: BSP ISO 228-1  
 Gasket: O-ring Viton®

Lever as spare part available on request

| Art.No. | Size  |
|---------|-------|
| 087330  | 1"    |
| 087340  | 1"1/4 |
| 087350  | 1"1/2 |
| 087360  | 2"    |

391



**Ball valve heavy type Male-female**

Body: chrome plated brass  
 Lever material: aluminium  
 Thread: BSP ISO 228-1  
 Gasket: NBR

| Art.No. | Size  |
|---------|-------|
| 093950  | 1"    |
| 093960  | 1"1/4 |
| 093970  | 1"1/2 |
| 093980  | 2"    |

395



**Ball valve heavy type Male-female**

Body: brass  
 Lever material: steel  
 Thread: BSP ISO 228-1  
 Gasket: O-ring Viton®

CE  II 2G

| Art.No. | Size |
|---------|------|
| 093985  | 2"   |

400



**Ball valve Female-female**

Body: chrome plated brass  
 Lever material: aluminium  
 Thread: BSP ISO 228-1  
 Gasket: O-ring Viton®

Lever as spare part available on request

|        |       |
|--------|-------|
| 087430 | 1"    |
| 087440 | 1"1/4 |
| 087450 | 1"1/2 |
| 087460 | 2"    |
| 087470 | 2"1/2 |
| 087480 | 3"    |
| 087490 | 4"    |

401



**Ball valve heavy type Female-female**

Body: chrome plated brass  
 Lever material: aluminium  
 Thread: BSP ISO 228-1  
 Gasket: NBR

| Art.No. | Size  |
|---------|-------|
| 094000  | 1"    |
| 094010  | 1"1/4 |
| 094020  | 1"1/2 |
| 094030  | 2"    |
| 094040  | 2"1/2 |
| 094050  | 3"    |

431



**Flanged gate valve**

**300°**

Body: cast iron  
 Internal gasket: PTFE + Carbon

| Art.No. | Description               |
|---------|---------------------------|
| 431-00  | 6 holes for cassoni       |
| 431-01  | 8 holes for cassoni       |
| 431-02  | without holes for cassoni |



# 5. VALVES AND ACCESSORIES FOR FUEL DISPENSERS

## 5.1 FLEXIBLE HOSES



**830**

### Flexible hose



Body: stainless steel  
Couplings material: brass  
Maximum pressure: 1,5 bar  
Thread: BSP ISO 228-1  
Turning female coupling

CE

| Art.No. | Size     | Length |
|---------|----------|--------|
| 090620  | 1" MF    | 300 mm |
| 090340  | 1"1/2 MF | 230 mm |
| 090350  | 1"1/2 MF | 300 mm |
| 090560  | 2" MF    | 230 mm |
| 090580  | 2" MF    | 300 mm |

**830/1**

### Flexible hose



Body: stainless steel  
Couplings material: brass  
Maximum pressure 1,5 bar  
Thread: BSP ISO 228-1

CE

| Art.No. | Size     | Length |
|---------|----------|--------|
| 090600  | 3/4" MM  | 300 mm |
| 090610  | 1" MM    | 300 mm |
| 090200  | 1"1/2 MM | 230 mm |
| 090210  | 1"1/2 MM | 300 mm |
| 090550  | 2" MM    | 230 mm |
| 090570  | 2" MM    | 300 mm |

**830/2**

### Flexible hose



Body: stainless steel  
Couplings material: steel  
Maximum pressure:1,5 bar  
Thread: BSP ISO 228-1

CE

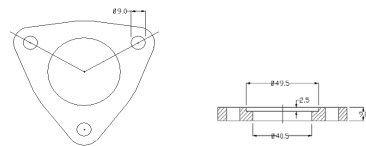
| Art.No. | Size      | Length |
|---------|-----------|--------|
| 090320  | 1"1/2" MM | 230 mm |
| 090330  | 1"1/2" MM | 300 mm |

**830/3**

### Flexible hose



Body: stainless steel  
Coupling and flanges material: brass  
Maximum pressure :1,5 bar  
Thread: BSP ISO 228-1



CE

| Art.No.    | Size                | Length |
|------------|---------------------|--------|
| 010830     | 1"1/2 M             | 200 mm |
| 010850     | 1"1/2 F             | 200 mm |
| 010830/350 | 1"1/2 F             | 350 mm |
| 010830/500 | 1"1/2 F             | 500 mm |
| 010980     | counterflange 1"1/2 | -      |

**830/4**

### Flexible hose



Body: stainless steel  
Coupling and flanges material: brass  
Maximum pressure:1,5 bar  
Thread: BSP ISO 228-1  
\*turning female coupling

CE

| Art.No. | Size              | Length |
|---------|-------------------|--------|
| 081210  | with fixed flange | 250 mm |
| 081250  | 1"1/2 M           | 250 mm |
| 081230* | 1"1/2 F           | 250 mm |

## 5. VALVES AND ACCESSORIES FOR FUEL DISPENSERS

### 5.1 FLEXIBLE HOSES

# RIDART

830/5

#### Flexible hose



Body: stainless steel  
Couplings material: brass  
Maximum pressure: 1,5 bar  
Thread: BSP ISO 228-1  
Completed with female coupling and NBR gasket

| Art.No.  | Size             | Length |
|----------|------------------|--------|
| 081295   | 1"1/2M x DN50    | 320 mm |
| 081296   | 1"1/2M x DN50    | 200 mm |
| 081295-2 | spare NBR gasket | -      |

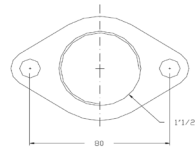
CE

830/7

#### Flexible hose



Body: stainless steel  
Flanges material: brass  
Maximum pressure: 1,5 bar



| Art.No. | Size   | Length |
|---------|--------|--------|
| 090370  | 1"1/2" | 240 mm |

CE

830/9

#### Flexible hose

**DN40**



Body: stainless steel  
Maximum pressure: 1,5 bar

| Art.No.    | Size   |
|------------|--------|
| 090374-350 | 350 mm |
| 090374-425 | 425 mm |
| 090374-550 | 550 mm |
| 090374-625 | 625 mm |
| 090374-750 | 750 mm |

CE

830/9F

#### Filter for 830/9



Body: brass  
Grid material: stainless steel  
Gasket: Viton®  
Height: 68 mm

| Art.No. | Size                    |
|---------|-------------------------|
| 090375  | Ø42 x Ø32               |
| 090376  | Viton gasket spare part |

832 MM

#### Braided flexible hose for high pressure



Body: stainless steel  
Pressure: up to 35 bar  
Couplings material: steel  
Thread: BSP ISO 228-1

Other sizes on request

| Art.No. | Size            | Length |
|---------|-----------------|--------|
| 090225  | 1"1/2M x 1"1/2M | 300mm  |
| 090230  | 2" M x 2" M     | 350 mm |
| 090233  | 2" M x 2" M     | 500 mm |
| 090235  | 2" M x 2" M     | 600 mm |

CE

## 5. VALVES AND ACCESSORIES FOR FUEL DISPENSERS

### 5.2 FILTERS, FILTER SUPPORT, HOSE MAST



231

#### In-line filter support



Body: aluminium  
Thread: BSP ISO 228-1

CE

| Art.No. | Size                    |
|---------|-------------------------|
| 000830  | 3/4" F x 3/4"F x 12 UNF |
| 000831  | 3/4" F x 3/4"F x 3/4"M  |
| 000840  | 1"F x 1"F x 12 UNF      |
| 000841  | 1"F x 1"F x 3/4"M       |
| 000845  | 1"F x 1"F x 16 UNF      |

231 T

#### Cap for filter support



Body: aluminium  
Gasket: Viton®, NBR  
Thread: BSP ISO 228-1  
\*gasket for 000940, 000941  
\*\* gasket for 000945

| Art.No.  | Size         |
|----------|--------------|
| 000940   | 12 UNF       |
| 000941   | 3/4"         |
| 000945   | 16 UNF       |
| 061990*  | O-ring Viton |
| 000946** | NBR gasket   |

1380

#### Hose mast for fuel dispenser

##### Lateral connection



Body: painted aluminium  
Spring material: stainless steel  
Suitable for hoses Ø 25, 30, 32

CE

| Art.No. | Length |
|---------|--------|
| 090180  | 860 mm |

1390

#### Hose mast for fuel dispenser

##### Bottom connection



Body: painted aluminium  
Spring material: stainless steel  
Suitable for hoses Ø 25, 30, 32

\*minimal order requested

CE

| Art.No. | Length |
|---------|--------|
| 090170* | 860 mm |

230 B



**Swivel  
Male-Female**

Body: aluminium, brass, stainless steel  
Gasket: O-ring Viton®  
Thread: BSP ISO 228-1

CE

| Art.No.   | Size  | Housing         |
|-----------|-------|-----------------|
| 087600    | 1"1/2 | Brass           |
| 087610    | 2"    | Brass           |
| 087610 AL | 2"    | Aluminium       |
| 087610 SS | 2"    | Stainless steel |

230



**Swivel**

Body: aluminium, \*stainless steel  
Gasket: O-ring Viton®  
Thread: BSP ISO 228-1

CE

NEW

| Art.No.    | Size                  |
|------------|-----------------------|
| 020670R    | 3/4" Male-Female      |
| 020680     | 3/4" Male x 1" Female |
| 020540R    | 1" Male-Female        |
| 230-01 SS* | 34x1,5 M x 3/4"Female |
| 230-02 SS* | 1" Male-Female        |

229



**90° swivel**

Body: aluminium  
Connection material: nickel-plated brass  
Gasket: O-ring Viton®  
Thread: BSP ISO 228-1

| Art.No. | Size      |
|---------|-----------|
| 092600  | 1"M x 1"F |

600



**In-line sight glass**

Body: aluminium  
\*nickel-plated brass  
Gasket: NBR  
Thread: BSP ISO 228-1

CE

| Art.No. | Size             |
|---------|------------------|
| 093440  | 3/4"M x 3/4"M    |
| 093400  | 3/4"F x 3/4"M    |
| 093410  | 1"F x 1"M        |
| 012000  | 1"F x 34 p 1,5   |
| 093380* | 1"1/2 F x 1"1/2M |

1370



**Break away valve  
axial shearing**

Body: Aluminium  
Poppet material: brass  
Gasket: O-ring Viton®  
Thread: BSP ISO 228-1  
Separation force: 110-130 kg

CE

| Art.No. | Size        |
|---------|-------------|
| 090700  | 3/4" x 3/4" |
| 090710  | 1" x 1"     |

1370E



**Breakaway valve axial shearing**

Body: aluminium, stainless steel  
Poppet material: brass  
Gasket: O-ring Viton®  
Thread: BSP ISO 228-1  
Separation force: 80-130 kg  
\* totally from stainless steel

CE

| Art.No.  | Size           |
|----------|----------------|
| 090720   | 1"F x 1"M      |
| 090720/E | 1"F x 34x1,5 M |
| 090720*  | 1"F x 34x1,5 M |



197AT



### Pressure vacuum vent with roll-over protection at 30°

Inlet poppet closes automatically in case of tank overturning at 30°  
 Body: aluminium, cap: steel, poppet: brass  
 Spring: stainless steel  
 Ball: steel  
 Pressure relief: standard 150 mbar  
 Gasket: Viton®/NBR

Available also with flame arrester

**NEW**

| Art.No.  | Size | Vacuum/Pressure  |
|----------|------|------------------|
| 197AT-50 | DN50 | + 150 - 2,5 mbar |

193



### Emergency vent

Body: steel, cap: aluminium  
 Spring: stainless steel  
 Pressure relief: standard 50 mbar  
 Gasket: Viton®  
 Thread: BSP ISO 228-1

**NEW**

| Art.No.   | Size |
|-----------|------|
| 193 - 50  | 2"   |
| 193 - 80  | 3"   |
| 193 - 100 | 4"   |
| 193 - 150 | 6"   |

197B1



### Safety valve

Inlet poppet closes automatically in case of tank overturning

Body: brass  
 Sealing material: Metal  
 Thread: BSP ISO 228-1

| Art.No. | Size | Vacuum/Pressure |
|---------|------|-----------------|
| 094430  | 1" F | + 15 - 10 mbar  |

197B3



### Pressure vacuum vent

Inlet poppet closes automatically in case of tank overturning

Body: aluminium  
 Poppet: brass/stainless steel  
 Thread: BSP ISO 228-1

| Art.No. | Size       | Vacuum/Pressure      |
|---------|------------|----------------------|
| 094436  | 1" M       | + 0,65 bar - 10 mbar |
| 094437  | 1" M       | + 0,3 bar - 10 mbar  |
| OR3143  | 36,17X2.62 | O-RING VITON         |

197-400



### Pressure vacuum vent

#### flanged for diesel

Inlet poppet closes automatically in case of tank overturning

Body: aluminium  
 Gasket: NBR  
 Thread: BSP ISO 228-1

| Art.No.   | Size | Description         |
|-----------|------|---------------------|
| 194-400-1 | 2" F | + 0,4 bar - 10 mbar |
| 194-400-G | -    | gasket              |

197-401

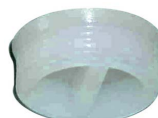


### Flange for valve 197-400

Body: aluminium  
 4 holes  
 Distance between holes: Ø 120 mm  
 Thread: BSP ISO 228-1

| Art.No. | Size |
|---------|------|
| 197-401 | 2" M |

197-415



### Plug 100°C melting temperature

Body: low density polyethylene  
 Thread: BSP ISO 228-1

| Art.No. | Size     |
|---------|----------|
| 197-415 | 1" 1/2 M |

198

## Active coal vent



Body: brass  
Active coal size: Ø 5mm x 5/12mm  
Thread: BSP ISO 228-1  
Air treatment: 250 l/h of contaminated air

| Art.No. | Size     |
|---------|----------|
| 094465  | 1" 1/2 F |
| 094466  | 2" F     |



1510

## Anti-siphon valve



Body: aluminium, PTFE-coated  
Poppet material: brass/stainless steel  
Gasket: Viton®, (PTFE on request)  
Thread: BSP ISO 228-1

| Art.No.     | Size                | Product   |
|-------------|---------------------|-----------|
| 1510-01     | 1" 1/2 F x 1" 1/2 F | Diesel    |
| 1510 B      | 1" 1/2 F x 1" 1/2 F | Gasoline  |
| 1510-01PTFE | 1" 1/2 F x 1" 1/2 F | Chemicals |

**NEW**



55B

## Adjustable angle check valve



Body: brass/aluminium, \*\*PTFE  
Poppet material: brass  
Gasket: O-ring Viton®, (PTFE on request)  
Spring material: stainless steel  
Thread: BSP ISO 228-1

\*On sale while stocks last, valves made of brass, then available in brass/aluminium

| Art.No.       | Size     | Pressure        |
|---------------|----------|-----------------|
| 092210*       | 1" F     | 0,15 - 0,35 bar |
| 092215*       | 1" 1/4 F | 0,15 - 0,35 bar |
| 092220        | 1" 1/2 F | 0,15 - 0,35 bar |
| 092225*       | 2" F     | 0,15 - 0,35 bar |
| 092225 PTFE** | 2" F     | 0,15 - 0,35 bar |

**NEW**



60B

## Angle check valve with variable adjustments



Body: brass  
Poppet material: brass  
Gasket: Viton®, (PTFE on request)  
Spring material: steel  
Thread: BSP ISO 228-1

| Art.No. | Size     |
|---------|----------|
| 60B-25  | 1" F     |
| 60B-32  | 1" 1/4 F |
| 60B-40  | 1" 1/2 F |
| 60B-50  | 2" F     |



21A

## Anti-siphon check valve



Only on request  
Body: brass  
Gasket: Viton®  
Thread: BSP ISO 228-1

| Art.No. | Size     | Pressure       |
|---------|----------|----------------|
| 092615  | 1" F     | 0,2 - 0,25 bar |
| 092625  | 1" 1/2 F | 0,15 - 0,3 bar |
| 092626  | 1" 1/2 F | 0,2 - 0,35 bar |



# “SAFER THAN EVER”

All our products are made from primary alloys, which in a small part contain substances dangerous to the environment and to people.

Don't dispose those into the environment but dispose of properly.

Our ambition is being recognized as a world leader in the production of safety equipment for fuel and chemicals storage tanks.