

mod. **GSD8**  
single jet - super dry



## Mod. GSD8

Getto unico, quadrante asciutto, lettura diretta su 8 rulli numeratori. Realizzato nelle versioni per acqua fredda (30° C) e calda (90° C) nei calibri  $\varnothing$  15 e 20 mm (1/2" e 3/4"). Quadrante orientabile su 360°. Esclusi rischi di corrosione e sedimentazione. Garanzia di lunga durata ed elevata precisione.

## Mod. GSD8

Single jet, dry dial, direct reading on 8 numerical rolls. Produced in the versions cold water (30° c) and hot water (90° C) in the diameters 15 and 20 mm (1/2"- 3/4"). Dial can rotate 360°. Risks of corrosion and sedimentation are excluded. Guaranteed long durability and elevated precision.

## Mod. GSD8

Chorro único, cuadro seco, lectura directa sobre 8 rodillos numerados. Construído en las versiones para agua fría (30° C) y caliente (90° C) en los calibres  $\varnothing$  15 y 20 mm (1/2" y 3/4"). Cuadro orientable a 360°. Excluídos los riesgos de corrosión y sedimentación. Garantía de larga duración y elevada precisión.

## Mod. GSD8

Jet unique, cadran sec à lecture directe sur 8 rouleaux numériques, disponible en version eau froide (30°) ou eau chaude (90° C) eten 2 calibres 15 ou 20 mm (1/2" ou 3/4"), cadran orientable à 360°, exclus tous problèmes de corrosion et d'incrustation, fiabilité dans le temps et précision élevée.

## Mod. GSD8

Einzelwasserstrahl, trockenes Ziffernblatt, Direktablesung auf 8 Zahlrollen. Produziert in den Versionen Kaltwasser (30 Grad) und Warmwasser (90 Grad) in den Durchmesser 15 und 20 mm (1/2 Zoll-3/4 Zoll). Um 360 Grad schwenkbares Ziffernblatt. Die Risiken von Rost und Ablagerungen sind ausgeschlossen. Garantiert lange Haltbarkeit und erhöhte Genauigkeit.

## Мод. GSD8

Одноструйный, сухоходный, крыльчатый счётчик холодной (30°С) и горячей (90°С) воды, прямой считывание на 8 роликов. С диаметром условного прохода 15 или 20мм (1/2"– 3/4"). Вращаемый на 360° циферблат. Гарантия долговечности и высокой точности. Исключены риски коррозии и осаднения.

## Caratteristiche tecniche - Technical features

Calibro Size	DN	mm in	15 (1/2")	20 (3/4")
Portata massima Max flow rate	Qmax	m <sup>3</sup> /h	3	5
Portata nominale Nominal flow rate	Qn	m <sup>3</sup> /h	1,5	2,5
Portata di transizione Transitional flow rate	Qt ±2%	l/h	120	200
Portata minima Min flow rate	Qmin ±5%	l/h	30	50
Lettura minima Min reading		l	0,05	0,05
Lettura massima Max reading		m <sup>3</sup>	100.000	100.000
Pressione max di esercizio Max working pressure		bar	16	16

Classe B-H/A-V  
Class B-H/A-V

Acqua fredda 0°- 30°C  
Cold water 0°- 30°C

Acqua calda 30°- 90°C  
Hot water 30°- 90°C

Trascinamento magnetico  
Magnetic transmission

Quadrante orientabile su 360°  
360° revolving dial

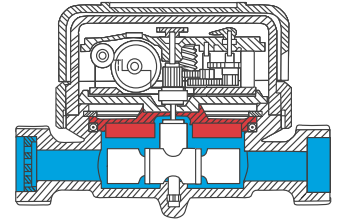
Piastra di tenuta antigelo su richiesta  
Antifrost sealing plate on request

Orologeria superiore a tenuta  
Water proof mechanism

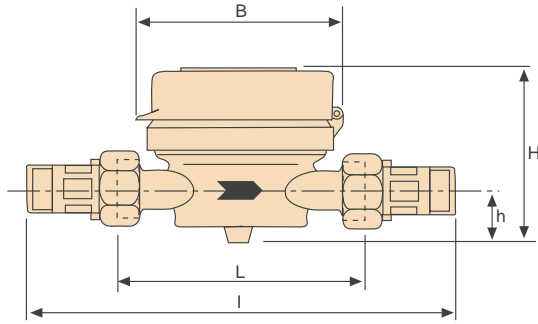
Lettura in galloni imperiali su richiesta  
Reading in imperial gallons on request

Coperchio su richiesta  
Lid on request

Dispositivo antimagnetico su richiesta  
Anti magnetic protection device on request



## Dimensioni e pesi - Dimensions and weights



Calibro Size	mm in	15 1/2"	15 1/2"	15 1/2"	20 3/4"	
L	mm	80	110	115	130	
I	mm	160	190	195	228	
H	mm	73	73	73	73	
h	mm	18	18	18	18	
B	mm	85	85	85	85	
d	mm	3/4"	3/4"	7/8"-3/4"	1"	
Pesi Weights	con raccordi with unions	Kg	0,60	0,65	0,70	0,85
	senza raccordi without unions	Kg	0,45	0,50	0,55	0,60

Coperchio  
Lid

Anello di chiusura  
Sealing ring

Calotta trasparente  
Transparent cup

Guarnizione tenuta  
Holding gasket

Piastra di tenuta  
Sealing plate

Turbina  
Turbine

Guarnizione tenuta  
Holding gasket

Filtro  
Strainer

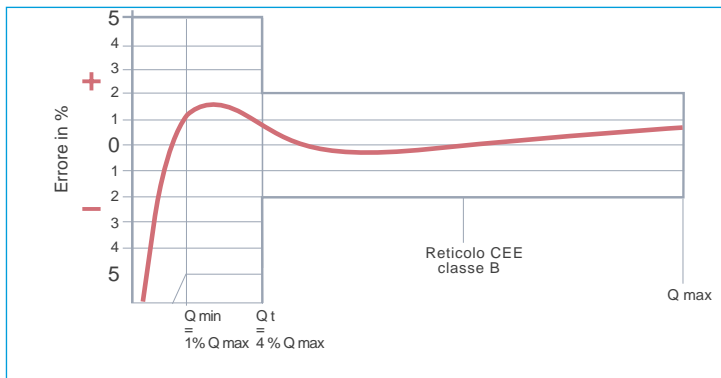
Orologeria  
Totalising mechanism

Anello  
Seeger

Perno di base  
Pivot

Cassa ottone  
Brass body

## Curva tipica degli errori dei contatori a turbina Typical error curve of turbine meters



## Curva delle perdite di carico dei contatori ø 15 e 20 mm Loss of head curve of ø 15 and 20 mm water meters

