

AVIATION FUEL SAMPLER



A reverse action sampler allowing one handed operation. Suitable for use with the closed circuit sampler.

ASSEMBLY



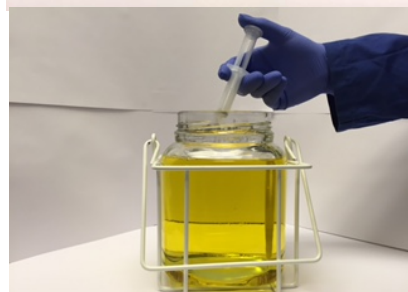
Fit inner tube B into outer tube C. Push down as far as possible.

Place thumb piece A on end of outer tube C and turn clockwise until locked

INSTRUCTIONS FOR MANUAL TESTING



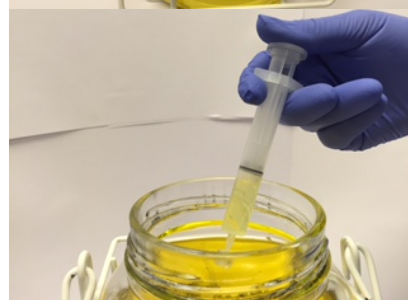
Place a Shell Water Detector (supplied separately) on nozzle end of outer tube C



Place thumb on thumb piece A and fingers beneath the ring at top of inner tube B



Bring inner tube B upwards towards thumb piece A to draw fuel through the Shell Water Detector



The indicator line on the outer tube C shows 5ml level

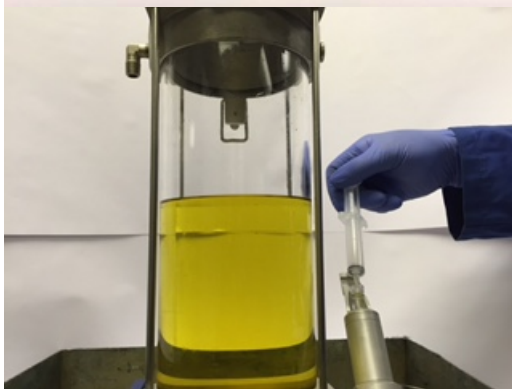
Follow the instructions for use of the Shell Water Detector

To release liquid hold the thumb piece A and pull the finger ring downwards with other hand

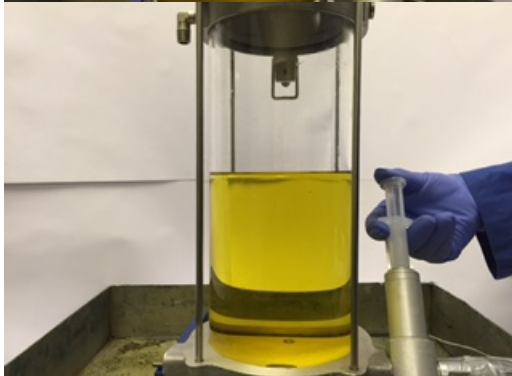
INSTRUCTIONS FOR USE WITH THE CLOSED CIRCUIT SAMPLER



Place a Shell Water Detector on the nozzle end of the outer tube



Insert the sampler with the Shell Water Detector in place into the syringe housing of the closed circuit sampler



Press down on the thumb piece to release the flow of fuel



With the thumb on the thumb piece A, pull the inner tube B towards the thumb piece using fingers placed under the inner ring

Continue to pull fuel through the sampler until fuel appears at the 5ml indicator line

Follow the instructions for use of the Shell Water Detector

To release liquid hold the thumb piece A and pull the finger ring downwards with other hand

MAINTENANCE

Preserve smooth operation of sampler by lubricating inner tube ring with a small amount of liquid paraffin. Spread into barrel of outer tube by working inner tube up and down.