

INOX 22 & 36 ROUND FILTER HOUSINGS



Product Specification

-  316L STAINLESS STEEL POLYCOATED
-  120°C
-  10 BAR
-  sfwt.eu/pfh-spc
-  PDFs
- 
- 

Ordering Details

Product Code	Material	Cartridge Quantity	Cartridge Size (")	Flange Size (")	Gauge Ports	Mounting Tabs
PFH	SPC = Stainless Steel Polycoated	22	30	4 DN100	GP	MT
		22	40	6 DN150		
		36				
PFH	SPC				GP	MT

e.g. PFH-SPC-22-40-4-GP-MT

Packaging	22"x 30"	22"x 40"	36" x 40"
	1 at 95kg	1 at 105kg	1 at 170kg



Features & Information

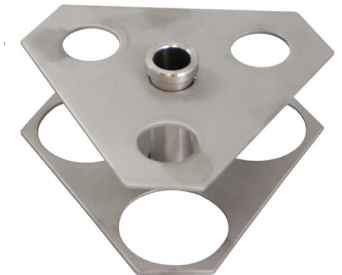
- The PED compliant and DWI approved PFH large multi-round housing with 4" or 6" flanges achieve flow capacities over 4,100 lpm with minimal pressure loss
- Manufactured with heavy duty mounting legs which bolt to the floor for added security
- Swing bolt and davit arm head configuration for quick, easy and safe cartridge change-out
- Housings feature top plates with tie rod threads to evenly spread compression over the spring seals making change-out easy
- Gauge ports allow two gauges to be fitted to easily read differential pressure
- Drains are 1/2" on the 22 round and 3/4" on the 36. All housings accept cartridges with an outer diameter of up to 2 5/8". For 2 3/4" diameter cartridges, change coding to 21 or 32 respectively
- Buna-N seal as standard

4" or 6" flanges are used to achieve flow capacities over 4,100 lpm



Davit arm and swing bolt closure makes cartridge change-out quick and simple

Adjustable top plates accept variable length filter cartridges



Compatible End Caps



Standard DOE Cartridges e.g. Wounds, Spun, Pleated

A = Open End

E = 222

G = Closed Recessed End

H = Fin