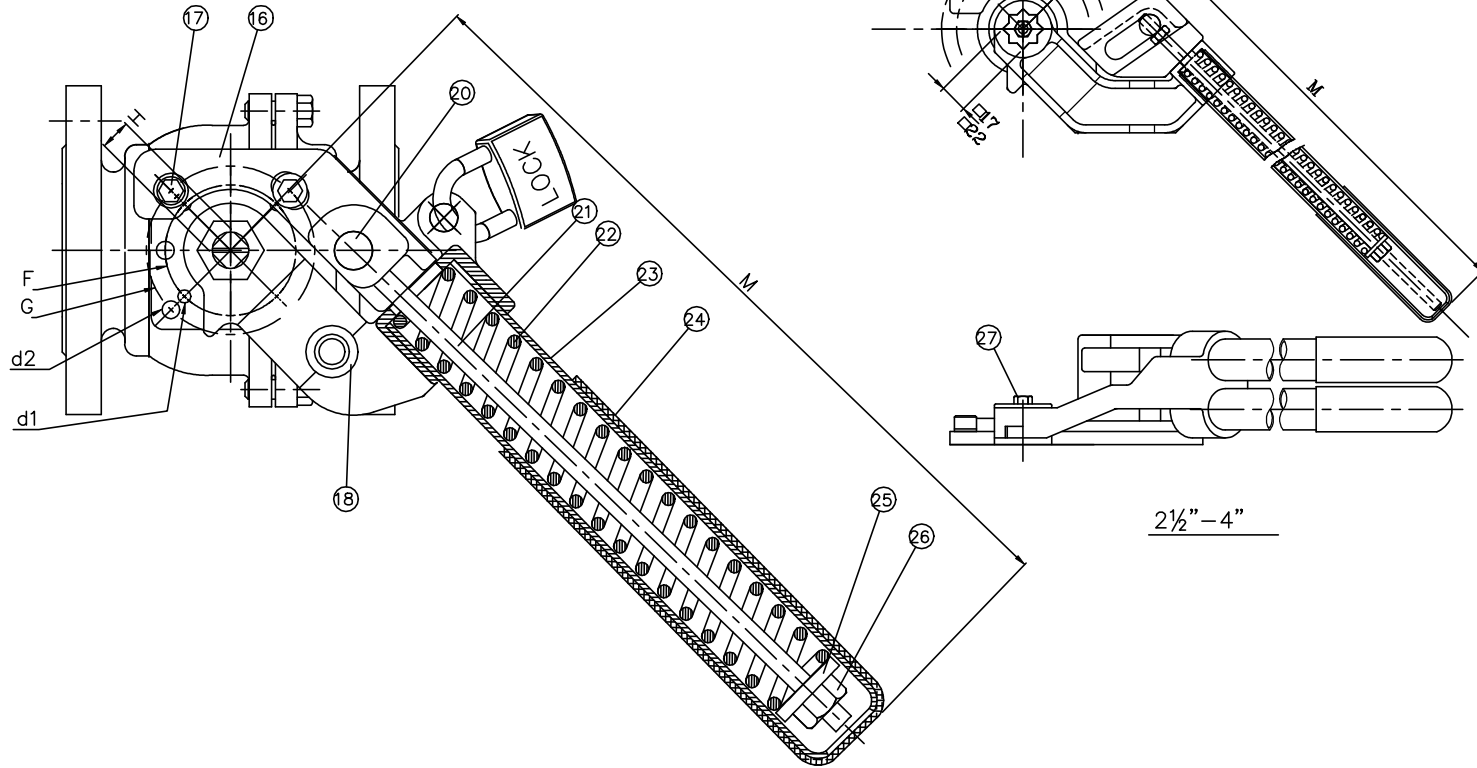


Spring Handle Device

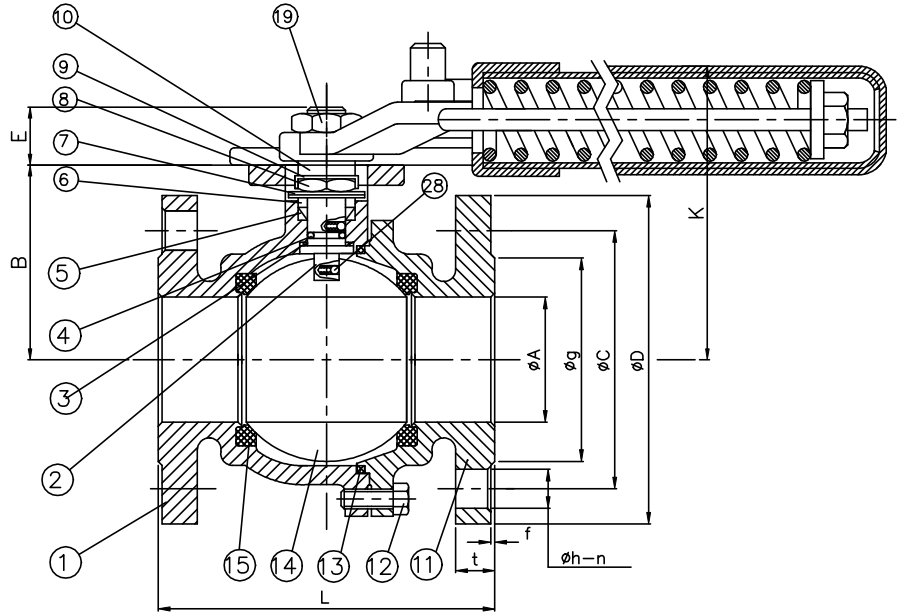


Specification

- * Available in stainless steel or carbon steel
- * Body & end are investment cast
- * Self adjusting stem packing
- * Blow-out proof stem design
- * 100% air tested under water at 100 psi
- * Temperature range -20 to 450°F
- * Iso 5211 direct mounting pad
- * Option: Silicone Free/ Oil & Grease Free /Anti-Static Devices

General Design Information

- * Face To Face Dimension : ANSI B16.10
- * Flanged Dimension : ANSI B16.5
- * Wall Thickness : ANSI B16.34
- * Flanged Finish : MSS SP-6
- * Pressure Test & Inspection : API 598



NO.	NAME OF PARTS	MATERIAL OPTION	
		STAINLESS STEEL	CARBON STEEL
1	BODY	CF8M/DIN 1.4408	WCB/DIN 1.0619
2	STEM	SS 316	SS 316
3	THRUST WASHER	RPTFE	RPTFE
4	O-RIG	VITON	VITON
5	STEM PACKING	PTFE	PTFE
6	GLAND	SS 304	SS 304
7	DISK WASHER	SS 301	SS 301
8	STEM NUT	SS 304	SS 304
9	NUT LOCK	SS 304	SS 304
10	WASHER	SS 304	SS 304
11	FLANGE CAP	ASTM A351 Gr. CF8M	ASTM A216 Gr. WCB
12	BOLTS	SS 304	SS 304
13	GASKET	PTFE	PTFE
14	BALL	SS 316	SS 316
15	BALL SEATS	PTFE	PTFE
16	ANCHOR	CF8	CF8
17	SOCKET HEAD SCREW	SS 304	SS 304
18	HANDLE HEAD	CF8	CF8
19	HANDLE NUT	SS 304	SS 304
20	ANCHOR SCREW	SS 304	SS 304
21	SPRING ROD	SS 304	SS 304
22	SPRING	SWP-B	SWP-B
23	HANDLE EXTENSION	SS 304	SS 304
24	GRIP	PVC	PVC
25	WASHER	SS 304	SS 304
26	HEX NUT	SS 304	SS 304
27	HANDLE BOLT(2-1/2~4")	SS 304	SS 304
28	ANTI-STATIC	SS 316	SS 316

SIZE	A	B	E	L	H	K	M	F	G	d1	d2	FLANGE DIMENSIONS (CLASS 150)						
												D	BOLT HOLE			t	g	f
													C	h	n			
1/2	15	48	12	108	9	74	170	36	42	6	6	89	60.5	16	4	11.2	35	1.6
3/4	20	53	11.5	117	9	79	170	36	42	6	6	98	70	16	4	11.2	43	1.6
1	25	59	14	127	11	86	220	42	50	6	7	108	79.5	16	4	11.2	51	1.6
1.1/4	32	71	13	140	11	98	220	42	50	6	7	117	89	16	4	12.7	64	1.6
1.1/2	38	76	16	165	14	104	280	50	70	7	9.2	127	98.5	16	4	14.3	73	1.6
2	50	85	16	178	14	113	280	50	70	7	9.2	152	120.5	19	4	15.9	92	1.6
2.1/2	65	93.5	18	190	17	172	500	70	102	9.2	11.4	178	139.5	19	4	17.8	105	1.6
3	80	105	18	203	17	182	500	70	102	9.2	11.4	190	152.5	19	4	19.1	127	1.6
4	100	134.8	23.5	229	22	210	500	102	125	11.4	13.5	229	190.5	19	8	24.0	157	1.6

NAME	ANSI 150 flange ball valve	DWG.	Kun	DATE	08/08.2022
TYPE	207S+SH01	CHD.		DATE	
ZIPSON STEEL INDUSTRIAL CO., LTD.				DWG. NO.	230-000-G150-1A